

A Publication of the National Association of Health Services Executives

NAHSE

NOTES

EMPOWERING THE NEXT GENERATION OF HEALTH CARE LEADERS TODAY! 2018 WINTER ISSUE

NAHSE SALUTES 2017 SPONSORS

32nd ANNUAL EDUCATIONAL CONFERENCE

SAVE THE DATE

33rd ANNUAL EDUCATIONAL CONFERENCE &
23rd ANNUAL EVERETT V. FOX STUDENT CASE COMPETITION

OCTOBER 10-12, 2018

HILTON ORLANDO BUENA VISTA
HILTON ORLANDO LAKE BUENA VISTA
ORLANDO, FLORIDA

Inside The Issue

President's Welcome

32nd Annual Conference Review

National Leadership

NAHSE National Chapters

NAHSE Committees

Membership

National Issues

Political & Social Issues

Professionals On The Move



Here's To Your Success

NAHSE Colleagues,

Happy New Year! It truly is a blessing to serve as your National President and I thank each and every one of you for your continued commitment to NAHSE's mission. It is an exciting time in the life of our

organization, NAHSE will celebrate its 50th Anniversary this year and remains dedicated to promoting the advancement and development of diverse healthcare leaders AND elevating the quality of healthcare services rendered to minority and underserved communities. NAHSE is as relevant today as it was the day our Founding Members created the organization. Thank you for your continued service.

This issue of NAHSE Notes will highlight the success of our 32nd Annual Educational Conference which we held in San Antonio, Texas. Congratulations again to our scholarship recipients, our Young and Senior Healthcare Executives, the President's Award recipient and the Everette V. Fox Case Competition participants and winners! The annual conference was a great networking experience; congratulations again to our 2017 Co-Chairs, Audrey Smith and Al Campbell for their leadership.

As we prepare for an awesome 2018, we will honor our Founders and past accomplishments and ensure that we are ever ready for the opportunities that are ahead. Thank you again for your dedication and service to the National Association of Health Services Executives, together we will continue to inspire the healthcare leaders of tomorrow.

With Sincere Gratitude,

Richelle Webb Dixon, FACHE
National President
National Association of Health Services Executives



Richelle Webb Dixon, FACHE
National President
NAHSE

contents & special features

On The Cover

Richelle Webb Dixon, FACHE
National President
National Association of Health Services Executives

Inside Stories

Roy L. Hawkins, Jr., FACHE

Named Senior VP & Chief Executive Officer
Jackson North Medical Center

Brianna C. Clare and Kwamane Liddell

Awarded NAHSE Scholarships at Conference

UNC-Chapel Hill Wins

Everett V. Fox Student Case Competition

Asst. Administrator Darren Brownlee

Selected for New National Leadership Program to Build Health Equity

General Body Meeting:

"Improving Access to Care
Innovation in Healthcare through Telehealth"

President's Welcome

National Leadership

NAHSE National Chapters

NAHSE Committees

Membership

National Issues

Political & Social Issues

Professionals On The Move



Check www.NAHSE.org

Get updates on local and national issues

The National Association of Health Services Executives newsletter, NAHSE Notes, is published quarterly (Spring, Summer, Fall and Winter) and includes information on the latest regulatory and legislative developments, as well as the quality-improvement and leadership trends that are shaping and influencing the hospital and health system field. Readers get in-depth reporting on the issues and challenges facing hospital and health system leaders today. We make it our job to tell about the great things the organization and Chapters are doing every day to ensure the health of our community.

Editorial guidelines are available upon request. Advertising rates may be obtained by contacting nahsehq@NAHSE.org. Advertisements do not imply endorsement by NAHSE. No part of this publication may be reproduced in any form without written permission of the publisher. Opinions expressed in this publication do not necessarily reflect official policy of the National Association of Health Services Executives.

If you have any news and updates that you want to share with other members in an upcoming issue, please e-mail your items in Microsoft Word or another compatible format to nahse@NAHSE.org. If you have a graphic or picture that you'd like to include, please send it as a separate file.

www.NAHSE.org

1050 Connecticut Ave., N.W., 5th Floor Washington, DC 20036

p: 202.772.1030 f: 202.772.1072

bglover@NAHSE.org ktucker@NAHSE.org

In the past, NAHSE Notes has included some of the following types of information: **Advocacy Issues, Legislative Issues, Promotions, Educational Opportunities, Awards, Achievements, Committee Updates, Journal Submissions, Participations, Business Opportunities, Mentoring Experiences, Workshops.**

Next submission deadline:

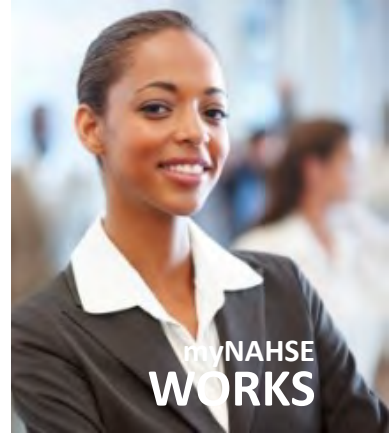
5:00 p.m., Friday, February 23, 2018



© 2018 NAHSE.org



National Association of
Health Services Executives
Empowering the Next Generation
of Health Care Leaders Today



Empowering the Next Generation of Health Care Leaders Today National Association of Health Services Executives EXECUTIVE COMMITTEE



PRESIDENT

Richelle Webb Dixon, FACHE
Missouri City, TX



SECRETARY

Nicholette L. Bourgeois, MHA
Director, Medicare Strategy Operations
Kaiser Permanente
Redwood City, CA



AT-LARGE BOARD MEMBER

Pamela Sutton-Wallace, MPH
Chief Executive Officer
University of Virginia Medical Center
Charlottesville, VA



PRESIDENT-ELECT

Fabian A. Stone, MBA, MHA, MT(ASCP)
Associate VP, Patient Revenue
Duke University Health System
Durham, NC



PARLIAMENTARIAN

Darren Brownlee, MHA
Assistant Administrator
Johns Hopkins Medicine
Baltimore, MD



AT-LARGE BOARD MEMBER

Corwin N. Harper, MHA, FACHE
Senior Vice President,
Area Manager/Hospital Administrator
Kaiser Permanente Napa Solano Area
Vallejo, CA



TREASURER

Al Webb
Retired Healthcare Consultant
Lone Tree, CO



IMMEDIATE PAST PRESIDENT

Anthony King, FACHE, MHSA
CEO & Executive Director
The Wellness Plan
Detroit, MI



AT-LARGE BOARD MEMBER

Joy D. Calloway, MBA, MHSA
President & CEO
New Center Community Mental
Health Services
Detroit, MI



**National Association of
Health Services Executives**
Empowering the Next Generation
of Health Care Leaders Today



EARLY CAREERIST LIAISON

Cachet R. Colvard, MBA, MHSA
Administrative Fellow
Cleveland Clinic
Cleveland, OH



GENERAL COUNSEL

Clifford E. Barnes, Esq.
Partner
Epstein Becker & Green, P.C.
Washington, D.C.

National Association of Health Services Executives Calendar of Events

WWW.NAHSE.ORG



National Association of Health Services Executives
Empowering the **Next Generation**
of Health Care Leaders Today

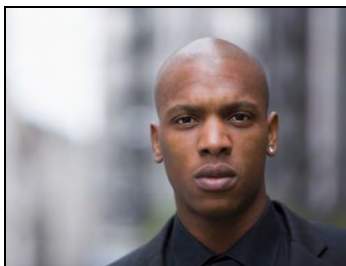
GIVING

JOIN NAHSE



INSPIRING

RENEW YOUR MEMBERSHIP



ENCOURAGING

BE ACTIVE IN YOUR CHAPTER



SUCCEEDING

BECOME A LEADER



MISSION STATEMENT

The National Association of Health Services Executives is a non-profit association of Black health care executives founded in 1968 for the purpose of promoting the advancement and development of Black health care leaders, and elevating the quality of health care services rendered to minority and underserved communities.

NAHSE NATIONAL 2018 MEETINGS

33rd Annual Educational Conference & 23rd Everett V. Fox Student Case Competition
October 10-12, 2018
Hilton Orlando Lake Buena Vista
Orlando, Florida

Call NAHSE for more information
1050 Connecticut Ave. NW, 5th Flr.
Washington, DC 20036
202-772-1030



NAHSE 2018 Editorial Calendar and Advertising Information

2018 SPRING ISSUE

January / February / March
Artwork / Materials Deadline
February 23, 2018
Issue Released
March 1st

2018 SUMMER ISSUE

April / May / June
Artwork / Materials Deadline
April 27, 2018
Issue Released
June 1st

2018 FALL ISSUE

July / August / September
Artwork / Materials Deadline
August 3, 2018
Issue Released
September 1st

2018 WINTER ISSUE

October / November / December
Artwork / Materials Deadline
October 26, 2018
Issue Released
December 1st

www.NAHSE.org



National Association of Health Services Executives
Empowering the **Next Generation**
of Health Care Leaders Today

Reducing Health Disparities Through Innovation in the Palmetto Health Richland Auditorium

with the NAHSE South Carolina Chapter For Education Day 2017 Featuring Dr. Damon Tweedy

Submitted NAHSE South Carolina



C-SUITE LEADERSHIP EXPERIENCE

May 31-June 3, 2018
LaPlaya Beach & Golf Resort
Naples, Florida



Inspiring Leaders

NATIONAL ASSOCIATION OF HEALTH SERVICES EXECUTIVES

1968-2018



Leading in a Time of Change:
With Compassion, Conviction and Courage

SAVE THE DATE

SAVE THE DATE

THANK YOU TO OUR 2017 SPONSORS

DOUBLE PLATINUM



PLATINUM



GOLD



SILVER



BRONZE



FRIENDS



SUPPORTERS

Al Campbell
Erlanger Health System
Froedtert Health
Kenneth Grant
Methodist Healthcare Ministries
NAHSE Baltimore Chapter

www.NAHSE.org

Congratulations

2017 NAHSE National Annual Award Recipients

32nd Annual Educational Conference
Creating a Healthy America Together: Serving our Communities

www.NAHSE.org



2017 Young Healthcare Executive **Jyric Sims, FACHE** CEO Medical City Fort Worth

The Young Healthcare Executive award is given to a NAHSE member, under 40 years of age with progressive management experience in healthcare organization(s) and has demonstrated commitment to the development and career of a young health care professional, involvement in advocacy and public policy and active in community organizations.

Congratulations Jyric!



2017 Senior Healthcare Executive **Corwin N. Harper, MHA, FACHE** Senior Vice President, Area Manager/Hospital Administrator Kaiser Permanente Napa Solano Area

The Senior Health care Executive Award is given to an active NAHSE member who has demonstrated leadership and vision in the healthcare field and has demonstrated commitment to the advancement and development of African-American healthcare professionals.

Congratulations Corwin!



National Association of
Health Services Executives
Empowering the Next Generation
of Health Care Leaders Today

Congratulations

2017 NAHSE National President's Award

Denise Brooks-Williams, FACHE
Henry Ford Wyandotte Hospital

www.NAHSE.org

Denise Brooks-Williams, FACHE
President & Chief Executive Officer
Henry Ford Wyandotte Hospital



A native of Michigan, Denise received her bachelors and masters degrees in health services administration from the University of Michigan before starting her career as a management fellow at Mercy Hospital in Detroit. She has been active in numerous professional groups including serving as president of the National Association of Health Services Executives (NAHSE), one of the premier minority health professional organizations in the United States.

In 2013, Denise Brooks-Williams was named president and CEO of Henry Ford Wyandotte Hospital which serves the Downriver region and surrounding communities of southeast Michigan with approximately 2,400 employees, 600 medical staff members, including Henry Ford Health Center-Brownstown outpatient facility and physician practices.

Brooks-Williams is active in several community- and charitable-based organizations. She is a past chair of the United Way Community Services--Neighborhood and Family Multi-Services Allocation Committee and a past member of the Community Impact Cabinet, the Lighthouse of Oakland County board, and secretary of the board of Ennis Center for Children. She currently serves on the University of Michigan Health Management and Policy Alumni Association, National Association of Health Service Executives, and the United Way. Brooks-Williams is actively engaged in the promotion of growth and diversity in the health care profession. In addition to her

service with NAHSE, she served as a board member of the Institute of Diversity, serves as delegate to Regional Policy Board 5 of the American Hospital Association's Section for Health Care Systems and was appointed in April by Governor Rick Snyder (MI) to the Certificate of Need Commission.

Among Brooks-Williams' honors are receiving the University of Michigan Five Under Ten alumni award for civic and professional service. At its 2004 educational conference, NAHSE presented her the Young Health Care Executive of the Year Award. She was included in the 'Who's Who' in Black Detroit magazine, and awarded the Early Careerist Award from the Michigan Chapter of the American College of Healthcare Executives (ACHE). The Michigan Chronicle selected her as a winner of the 2010 Women of Excellence Award. In April 2010, she was named one of the 'Top 25 Minority Executives in Health Care' by Modern Healthcare magazine. August 6, 2012. She was named 100 most influential Women 2016.

>> National Political and Social Issues Affecting Our Community

The NAHSE St. Louis Chapter presented its 5th Annual Health Disparities Symposium:

Opioid Epidemic: A Community-Based Approach to Curtailing Supply and Demand

By NAHSE St. Louis Chapter

5th Annual Healthcare Disparities Symposium: Opioid Epidemic: A Community-Based Approach to Curtailing Supply & Demand. The motivation around this year's topic was born out of the growing attention that opioid related crimes and overdoses have garnered recently, especially in suburban, predominately white communities. The NAHSE St. Louis Chapter's goals were to raise awareness of the epidemic and highlight its impact on the African American community. Dr. Theodore J. Cicero, Washington University School of Medicine, served as our keynote speaker.

Panelists included Kendra Holmes, Rph, PharmD, COO, Affinia Healthcare; Daniel Isom II, PhD, University of Missouri-St. Louis/retired Chief of Police for St. Louis City; Rep. Cora Faith Walker, JD, MPH, 74th District, MO House of Representatives; and Howard Weissman, LCSW, Executive Director, National Council on Alcoholism & Drug Abuse.





The Percy Allen Chapter of the Year Award is presented annually to the chapter that demonstrates outstanding chapter professional development activities along with membership growth and active participation. During the 32nd Annual Education Conference held in San Antonio, the 2017 winner of the Chapter of the Year Award was presented to the Baltimore Chapter.

The Baltimore Chapter provides many educational and networking forums for its members in meeting the needs of our student members, mid-careerist and senior leaders. As we are approaching 2018, we ask that you consider becoming a member of the NAHSE Baltimore Chapter and becoming more involved with a committee, as we promise to Educate, Empower & Engage now and for many years to come.



NAHSE
Baltimore

2017-2019 Executive Leadership Team



Maha Sampath
President



Wande Kotun
President-Elect



Darren Brownlee
Immediate Past President



Courtney Newkirk
Secretary



Tashonda Frazier
Treasurer



Samuel Boadu
Parliamentarian



Krystal Hampton
Communications & Marketing



George Howard
Public Policy



Clintonette Garrison
Community Service



Jillian Harp
Community Service



Mopeninwesu Oluayinka
Education & Student Liaison



Kashondra Smith
Education & Student Liaison

CHAPTER GOALS

EDUCATE

- Connect with youth (13 -18) and students (college undergraduates) building sustainable relationships providing various forms of mentorship and opportunities.
- Expanding and improving comprehensive health care education and participation, for the most vulnerable and disadvantaged populations.
- Organize a regional cluster/conference partnering with the various universities/hospitals within the area.

ENGAGE

- To encourage innovative partnerships that move beyond organizational walls.
- Utilize creative outreach methods to increase and retain membership by 75%.
- To contribute to the strategy and create innovative ideas of health policy, that meet the needs of the community.

EMPOWER

- Create a grant/scholarship program for those deserving and interested in pursuing a career in healthcare.
- To identify critical approaches for building a diverse leadership pipeline and strategies for influencing organizational cultures.
- To further expand the development and enrichment of healthcare leadership through the network of peers, executives and community leaders.

NAHSE BALTIMORE CHAPTER

P.O. Box 13515
Baltimore, Maryland 21203
NAHSEBaltimore@gmail.com

www.nahsebaltimore.org

NAHSE Honors Non-Traditional Graduate Students With Scholarships

At 32nd Annual Conference

Reprinted with the permission of Misty Starks – 832-283-7575 and Phyllis J. Bailey – 281-438-0985



Pictured from Left to right: Nygel Williams, Brianna Clare, Kwamane Liddell

The National Association of Health Services Executives (NAHSE) announces scholarship awards to non-traditional graduate students at its annual conference in San Antonio, Texas. The conference brings together more than 600 diverse healthcare professionals, including executives, insurers, and schools from across the United States and abroad. Each year, NAHSE recognizes some of the most promising students through the Haynes Rice Scholarship, the Florence Gaynor Award and the Ellis Bonner Scholarship. Each award is in the amount of \$2,500 and is intended to defray tuition costs. The 2017 awardees are as follows:

The Haynes Rice Scholarship recipient is Nygel Williams of the University of Maryland. Williams holds a Bachelor of Science degree in health

science from St. Louis University. Prior to starting his MHA at the University of Maryland, Nygel spent a year as the Villers Fellow for Health Care Justice at Families USA in Washington, D.C. During this time, he worked on national health care policy issues including the Affordable Care Act policy, Medicaid, and health equity. He also provided technical assistance to state advocates and enrollment assisters to advance health issues at the state level across the United States. In addition, Williams worked with the Legacy Leadership Institute for Public Policy, connecting retirement age Maryland residents with the opportunity to serve their community as part of the state legislature.

The Florence Gaynor Award was established to recognize outstanding achievements among female graduate students who are striving to become future leaders in healthcare management and NAHSE. This year's winner was Brianna Clare of St. Louis University. She is a native of Bowie, MD and earned her undergraduate degree in microbiology from the University of Pittsburgh. Currently she is a Master of Health Administration student. She works as a graduate research assistant conducting systematic literature reviews regarding the impact of patient navigation on vulnerable populations. Clare currently interns at the St. Louis VA Medical Center and the Department of Strategic Planning and Business Development Department at St. Luke's Hospital.

The Ellis Bonner Scholarship is a special category to recognize the distinguished leadership and academic achievement among non-traditional graduate students who are striving to become future leaders in healthcare management and NAHSE. This scholarship was awarded to Kwamane Liddell of St. Louis University who was recently recognized by the St. Louis Business Journal's 30 Under 30. A native of Bellwood, IL, his career began as a housekeeper in healthcare. This experience sparked his interest in nursing and he soon became the first African American male to graduate from his undergraduate nursing program. He is in the process of completing his Juris Doctor and Master of Health Administration at St. Louis University while supervising more than 80 nurses and clinical staff members at St. Alexius Hospital. Liddell also completed legal and administrative internships at Husch Blackwell, St. Louis Children's Hospital and NAHSE's Baltimore Chapter's Summer Internship at John Hopkins Medicine.



NAHSE St. Louis Chapter Immediate President

Was chosen as the Promise Award Winner at the 2017 Annual NAHSE Educational Conference

By NAHSE St. Louis Chapter



Carmel J. Hannah, MHA has been an active member since 2010. Her membership began with her participation in NAHSE's Annual Everett V. Fox Student Case Competition. Carmel has been an active member of NAHSE since 2010 without lapse. During her Administrative Fellowship in 2012 she became a member of the St. Louis Chapter. She quickly became engaged at a leadership level by taking on the Secretary position. In this role Carmel learned the ins and outs of the local Chapter, but still found time to contribute to the development of programs and the infrastructure. The pinnacle of her time as President when the St. Louis Chapter was awarded the Building Block Chapter of the Year Award at the NAHSE National Educational Conference in 2015.

Congratulations



2017 NAHSE National Annual Award Recipients

32nd Annual Educational Conference

22nd Everett V. Fox Student Case Competition

www.NAHSE.org

22nd Everett V. Fox Student Case Competition Award Winners

1st Place Award Winner

University of North Carolina at Chapel Hill

Teams members included:

- Lauren Jordan
- Oluoma Chukwu
- Jessica Broadus

3rd Place Award Winner

The Ohio State University

Teams members included:

- Gennel Vieira
- Esther Olsen
- Wilkister Tangasi

5th Place Award Winner

University of Illinois at Chicago

Teams members included:

- Heather Afriyie
- Alex Paul
- Stephanie Guinto

2nd Place Award Winner

Saint Louis University

Teams members included:

- Glassman
- Brianna C. Clare
- Kwamane Liddell

4th Place Award Winner

University of Michigan

Teams members included:

- Quian Callender
- Kara Wilson
- Medhane Amanuel



National Association of Health Services Executives
Empowering the **Next Generation**
of Health Care Leaders Today



National Association of Health Services Executives
Learn how today's leaders
are ensuring tomorrow's solutions

>> NAHSE.org

Founding Veterans Affairs (VA) Chapter Member Retires

Guy B. Richardson, FACHE

Submitted by Jasline Knox, MSHA, Chapter President of the VA NATIONAL (VETERAN AFFAIRS) Chapter



Guy B. Richardson, FACHE

"The servant-leader is defined as one who shares power; putting the needs of others first and helps people develop and perform as highly as possible."

The Veteran Affairs (VA) National Chapter announces with bittersweet joy the retirement of a dear friend and true servant leader, Guy B. Richardson. Mr. Richardson served over 30 years with the Department of Veterans (VA), Veterans Health Administration (VHA).

He began his impressive career with the VA as an Administrative Resident at the Long Beach, CA, VA Medical Center (VAMC) and has served in various progressively higher level positions of responsibility to include, Chief Executive Officer for the Daytona Ohio VAMC and Associate Director for Finance and Operations for the VA Maryland Health Care System.

On May 30, 2017, he retired as the Chief Operating Officer for the VA Capital Health Care Network. His responsibilities included oversight of administrative operations of a health care network that includes eight medical centers and over 25 outpatient clinics which serves Veterans in Maryland, Virginia, the District of Columbia, and West Virginia.

Mr. Richardson's notable accomplishments includes his service on the Veterans Health Administration (VHA) Diversity Advisory Board and as a member of the organizing committee that established and staffed the VHA National Office of Healthcare Equity which addresses healthcare disparities across the VA. As a leader in the VA, he developed, implemented, and exercised oversight of a significant amount of healthcare policies and initiatives for the over 150 medical centers across VHA. He has also held numerous positions on community and alumni boards and in 2011 he received the Cardinal Bernardin Community Service Award.

He also spent years giving back in the Baltimore Community, even serving on the Board of Directors of the Black Mental Health Alliance which worked to affect positive change related to mental health policy. He completed a three-year term as an American College of Healthcare Executives (ACHE) VA Regent, representing the College and VA members nationally.

Additional ACHE contributions include serving on the Maryland ACHE Chapter Board of Directors and as Chairperson of the ACHE CEO Committee in 2009. He received the ACHE Governor's Award, the Parity Inc. Top 10 African American Men Award in 2009, the VA ACHE Eastern Region Senior-Level Leadership Award in 2008, and an Achievement Award from the Cecil County, Maryland, Branch of the NAACP in 2001.

Since 1995, Guy has been a dedicated member of National Association of Health Service Executives for holding numerous formal and informal positions within local and national committees and was a founding member of the VA Chapter in 2006. His formal positions include VA National Chapter Treasurer, President Elect, and President. He also served on the National Board of Directors, National Board Executive Committee, and a member of the Nominating Committee.

Mr. Richardson has always understood that leadership and learning go hand and hand and continues to develop not only himself but others as well. He demonstrated commitment to developing and advancing talent within VA and NAHSE for many years, ensuring healthcare has a bright and diverse future. Mr. Richardson has been dedicated to mentoring, coaching, and advising young health care professionals in addition to ensuring they are aware of promotion opportunities and prepared for their next career step. As a result of his demonstrated commitment to the advancement of healthcare professionals, he was the recipient of the 2014 NAHSE Senior Healthcare Executive Award.

Mr. Richardson is a positive role model for all African American's in healthcare leadership. His impressive knowledge coupled with excellent interpersonal skills sets him apart from many of his peers. He will be deeply missed but we can only feel happy for him after many valuable years of service.

The VA National Chapter thanks you.



General Body Meeting: “Improving Access to Care

Innovation in Healthcare through Telehealth”

Submitted by the NAHSE Delaware Valley Chapter

General Body Meeting: “Improving Access to Care – Innovation in Healthcare through Telehealth”

In keeping with its efforts to engage members, NAHSE Delaware Valley Chapter held its first bi-annual General Body Meeting on Thursday, September 28, 2017 at the Children’s Hospital of Philadelphia. The meeting featured a keynote address on “*Improving Access to Care/ Innovation in Healthcare through Telehealth*” from Richard Kajim, Telehealth Planner for Delaware Health and Human Services. Additionally, the meeting provided a platform for members and other attendees to discuss chapter operations and goals, including its initiatives and activities, as well as key topics in healthcare affecting the Delaware Valley region and the national community. General Body Meetings will be held in February and September, annually.

NAHSE Delaware Valley Chapter supports The Advancement League



The Advancement League is an organization that empowers and provides the space for young professionals from varying health systems, locations and backgrounds to collaborate and share ideas. NAHSE-Delaware Valley Chapter representatives participated in The Advancement League’s one-day conference at the Children’s Hospital of Philadelphia on September 30.

The conference drew healthcare professionals from various cities in Pennsylvania, Maryland and Ohio and engaged them in productive conversations on enhancing healthcare delivery and educational support to school-aged children in underserved communities. The day ended with a tour of CHOP’s 520-bed main campus and adjacent facilities. This is the League’s second one-day conference this year.

The Advancement League will hold its first national conference in Lake Nona, Florida February 7-9, 2018. Visit www.theadvancementleague.org for details and to register.

Professional Development Update: 10th Annual Emerging Leaders’ Healthcare Summit



Valley Chapter intentionally stands with the national organization to empower the next generation of healthcare leaders. On Tuesday, October 10th, 2017 at the Hospital of the University of Pennsylvania, the Chapter proudly held its 10th Annual Emerging Leaders' Healthcare Summit.

In a round-table setting, the summit provides a professional forum for students and early careerists to be introduced to NAHSE and to network with C-suite professionals, SVPs, VPs and directors professionals from the Philadelphia area's leading healthcare organizations. Represented organizations included AmeriHealth Caritas, AtlantiCare, Children's Hospital of Philadelphia, Christiana Care Health System, St. Christopher's Hospital for Children, St. Luke's Health System and Temple University Hospital.

Dr. Zupenda Davis-Shine, 2017 Summit attendee and long-time NAHSE DVC member, describes the annual event as “an avenue for transparent conversations about the workforce and the creation of lifelong professional relationships. Attendees walk away with a wealth of information about advanced degrees, interviewing, career opportunities and climbing the corporate ladder.” This year’s summit boasted well over 50 attendees.



National Association of
Health Services Executives
Delaware Valley Chapter



National Association of
Health Services Executives
Delaware Valley Chapter

SLU Team Takes Home Second in National Healthcare Case Competition

At the 2017 National Association of Health Services Executives Conference

By NAHSE St. Louis Chapter



From left to right: Brianna Clare, Matt Glassman and Kwamane Liddell pose with their plaques from the National Association of Health Services Executives case competition. Photo by Kim Donoghue

On Oct. 20, three Master of Health Administration students took home second place in the National Association of Health Services Executives' (NAHSE) 22nd annual Everett V. Fox Student Case Competition. Brianna Clare, M.H.A. '18, and Kwamane Liddell, J.D./M.H.A. '18, also earned two of the three national student scholarships awarded during the NAHSE conference.

Clare, Liddell, and Matt Glassman, M.H.A. '18, competed against 30 schools across the country. They credit their success to their ability to work together as team and support from their coach, Kimberly Enard, Ph.D., assistant professor of health

management and policy at Saint Louis University's College for Public Health and Social Justice.

The team brainstormed how to improve health care in the city of Oakland, California, and came up with "The Oath" or the Oakland Alliance for Total Health. The name was fitting for an organization that promises to reach beyond the hospital's walls to improve patient's social determinants of health. By combining the Center for Medicare and Medicaid's Accountable Health Community model with the Collective Impact framework, The Oath uses patient navigators to link clinical and social services to better address health-related social

needs including food insecurity, violence, and poverty. Their model incorporates social needs screenings and a web-based interface to allow clinical providers and community organizations to collaborate in improving health outcomes throughout the community.

In addition to the case competition, the team was able to develop relationships with health care executives.

"NAHSE accelerated my development because it is more than a case competition: leaders from across the country take part in the competition as judges. Many take time to critique and mentor us after the conference. It also give us an opportunity to develop lasting relationships with students from other schools," says Liddell.

Two first-year students, Tariq Mahmood, JD/M.H.A. '20, and Aariah Suek, JD/M.H.A. '20, observed the entire process from preparation to execution; hopefully, that insight will give them a leg-up in next year's contest.

After last year's competition, Clare and Liddell created a case competition seminar to prepare themselves and other case teams at SLU. Since then, the idea has evolved and SLU's Department of Health Management and Policy recently applied for –and received– a \$3,660 CAHME/Aramark Innovation Grant.

"With the funding, we are going to implement an innovative case competition training curriculum that focuses on health care management analytics competencies and presentation skills," says Rhonda BeLue, Ph.D., department chair.

www.NAHSE.org



**National Association of
Health Services Executives**

Empowering the **Next Generation**
of Health Care Leaders Today

University of North Carolina-Chapel Hill Wins Everett V. Fox Student Case Competition

At 32nd NAHSE Conference

Reprinted with the permission of Misty Starks – 832-283-7575 and Phyllis J. Bailey – 281-438-0985



1st Place winners from UNC- Chapel Hill (L to R) Lauren Jordan (Detroit, MI); Oluoma Chukwu (Woodbridge, VA); and Jessica Broadus (Marietta, GA)

The University of North Carolina – Chapel Hill took home first place honors at the 22nd Anniversary of the Everett V. Fox Student Case Competition at the 32nd Conference of the National Association of Health Services Executives (NAHSE) in San Antonio, TX. This year's competition was sponsored by Kaiser Permanente, American College of Healthcare Executives, and Hospital Corporation of America. Additional winners include Saint Louis University, The Ohio State University, University of Michigan, and University of Illinois - Chicago.

Graduate students studying health administration, business administration and public health use the case study methodology of learning to analyze and find solutions for healthcare industry issues while enhancing their presentation skills. The student teams were asked to apply their knowledge, experience and creativity to the challenge of Making Oakland, CA, the Healthiest City in America. The teams presented their case findings and recommendations before panels of judges representing leaders in the healthcare field, corporate sponsors and academia. The winners were each awarded scholarship amounts noted below:

1st Place Winners - School Name: University of North Carolina- Chapel Hill Scholarship Amount: \$4,000; Students: - (L to R) Lauren Jordan (Detroit, MI); Oluoma Chukwu (Woodbridge, VA); Jessica Broadus (Marietta, GA);

2nd Place Winners - School Name: Saint Louis University - Scholarship Amount: \$3,000; Students: (L to R) Matt Glassman (Cleveland, OH); Brianna Clare (Bowie, MD); Kwamane Liddell (Bellwood, IL);

3rd Place Winners - School Name: The Ohio State University - Scholarship Amount: \$2,000; Students: (L to R) Gennel Vieira (Queens, NY); Esther Olsen (Salt Lake City, UT); Wilkister Tangasi (Iowa City, IA)

4th Place Winners - School Name: University of Michigan - Scholarship Amount: \$1,000; Students: (L to R) Quian Callender (Middletown, CT); Kara Wilson (Bowie, MD); Medhane Amanuel (Silver Springs, MD);

5th Place Winners - School Name: University of Illinois - Chicago - Scholarship Amount: \$500; Students: (L to R) Heather Afriyie (Chicago, IL); Alex Paul (Chicago, IL) Stephanie Guinto (Chicago, IL);

The Everett V. Fox Student Case Analysis and Presentation Competition was created in 1996 to provide graduate students a unique opportunity to enhance their problem analysis and presentation skills using the case method to address “real-life” business challenges faced by healthcare organizations. While participating in the competition the students are encouraged to network and connect with inspirational leaders in the healthcare field. Since the inception of the Case Competition, NAHSE has awarded nearly \$750,000 in scholarships to participants and continues to encourage student-learning as an effective way to advance knowledge and build a viable pipeline of future leaders in healthcare.



2nd Place winners from Saint Louis University - (L to R) Matt Glassman (Cleveland, OH); Brianna Clare (Bowie, MD); and Kwamane Liddell (Bellwood, IL)



3rd Place winners from The Ohio State University - (L to R) Gennel Vieira (Queens, NY); Esther Olsen (Salt Lake City, UT); and Wilkister Tangasi (Iowa City, IA)



4th Place winners from University of Michigan - (L to R) Quian Callender (Middletown, CT); Kara Wilson (Bowie, MD); and Medhane Amanuel (Silver Springs, MD)



5th Place winners from University of Illinois – Chicago - (L to R) Heather Afriyie (Chicago, IL); Alex Paul (Chicago, IL); and Stephanie Guinto (Chicago, IL)

Collaborative Commitment to Advance Executive Diversity

Submitted by Cie Armstead, ACHE Director of Diversity & Inclusion

In the fall of 2017, NAHSE and five other national organizations continued their collaborative commitment to advance diversity in the senior ranks of healthcare management through several ongoing and new initiatives.

This shared objective resulted from a February 2016 formal agreement signed on to by American College of Healthcare Executives (ACHE), Asian Healthcare Leaders Forum, Institute for Diversity in Health Management, LGBT Forum, NAHSE, and National Association of Latino Healthcare Executives (NALHE).

In September 2017, the collaborative group hosted a panel discussion on advancing diversity in healthcare management at the National Association of Latino Healthcare Executives' Leadership Summit. Representing NAHSE on the panel, Richelle Dixon highlighted NAHSE's leadership initiatives and delivered a powerful, personal story on the value of diversity of thought.

Earlier in 2017, the six collaborative partners presented a joint session at ACHE's Congress and plans are underway to host similar sessions at NALHE and NAHSE 2018 conferences.

The collaborative group continues development of its most ambitious project to-date: the Executive Diversity Career Navigator (EDCN). This online portal provides easy access to an array of career development tools and resources for diverse professionals at every stage of their healthcare management career.

The EDCN distinction is inclusion of the "voice" of diverse healthcare professionals sharing the successful strategies they have learned through their career journeys. In the fall of 2017, EDCN underwent a major redesign and content addition.

Check out EDCN www.edcnavigator and if you would like to contribute content, contact NAHSE headquarters.

The collaborative group will come together again in March 2018 for a first-time event at the ACHE Congress in Chicago. The "Better Together" Joint Diversity and Inclusion Reception will be held on Sunday, March 25, from 5:30pm to 7:00pm, at the Hyatt Regency Chicago.

Attendees will have the opportunity to learn more about the individual and collective work of each of the co-hosting organizations and network with a broad range of healthcare professionals. The reception is complimentary, but registration is required (you can register for the reception without Congress registration). A cash bar will be available.

Access the reception registration at http://www.ache.org/congress/diversity_reception.cfm.



National Association of Health Services Executives

Empowering the **Next Generation** of Health Care Leaders Today



Looking for that perfect fit?

Please visit the NAHSE CAREER CENTER and let us be your resource for making online employment connections in the healthcare industry.

Visit the NAHSE Career Center.

www.NAHSE.org/career-center



National Association of Health Services Executives

Empowering the **Next Generation** of Health Care Leaders Today

Johns Hopkins Medicine Assistant Administrator Darren Brownlee

Selected for New National Leadership Program to Build Health Equity

National Association of Health Services Executives



Darren Brownlee, MHA
Assistant Administrator
Johns Hopkins Medicine

Leaders from Honolulu, to Providence, R.I.—working across a range of fields, including social policy, community development, public health, and government—have been selected to participate in the Culture of Health Leaders program. These leaders will explore a diversity of pressing issues in health and equity, such as addressing the legacy of structural violence and denial of access to basic needs for marginalized communities; using physical design and other traffic calming measures to improve safety for motorists, pedestrians and cyclists; and

spearheading a new community garden that teaches kids about culture, race, and poverty.

As one of 40 selected applicants, Darren Brownlee, Assistant Administrator, Johns Hopkins Medicine / Doctoral Student, Johns Hopkins University joins Culture of Health Leaders, a program co-led by the National Collaborative for Health Equity and CommonHealth ACTION with support from the Robert Wood Johnson Foundation. Brownlee will join leaders from across the country to collaborate and innovate to solve persistent challenges and advance a Culture of Health—one that places well-being at the center of every aspect of life.

Along the way, he will develop high-level leadership skills through professional coaching, mentoring, networking, and an advanced leadership curriculum. While participating in the program, he will continue working full-time, applying new knowledge and leadership in his workplace and community.

"We're excited to welcome the second cohort of Culture of Health Leaders, who are authentically engaging with communities to elevate their voices and create an equitable, healthy nation," said Brian Smedley, Culture of Health Leaders co-director and executive director and co-founder of the National Collaborative for Health Equity. Natalie Burke, Culture of Health Leaders co-director and executive director of CommonHealth Action

notes, "These leaders demonstrate a willingness to engage in the deep, transformative work necessary to strengthen their leadership and their communities while creating opportunities for all people to achieve their best possible health."

The 40 selected leaders join the efforts of the first cohort of Culture of Health Leaders and the Robert Wood Johnson Foundation to build a Culture of Health.

Program partners providing training and coaching to leaders include: American Planning Association, Build Healthy Places Network, Center for Creative Leadership, Institute for Alternative Futures, and Leadership Learning Community.

Culture of Health Leaders is one of a number of leadership development programs supported by the Robert Wood Johnson Foundation (RWJF). These programs continue RWJF's legacy of supporting the development and diversity of leaders. Initially focused on health and health care, the programs have been expanded, because the Foundation knows that building a Culture of Health requires all of us in every sector, profession, and discipline to work together. The next application period for many of these programs will open in early 2018.

Additional information is available at www.cultureofhealth-leaders.org.



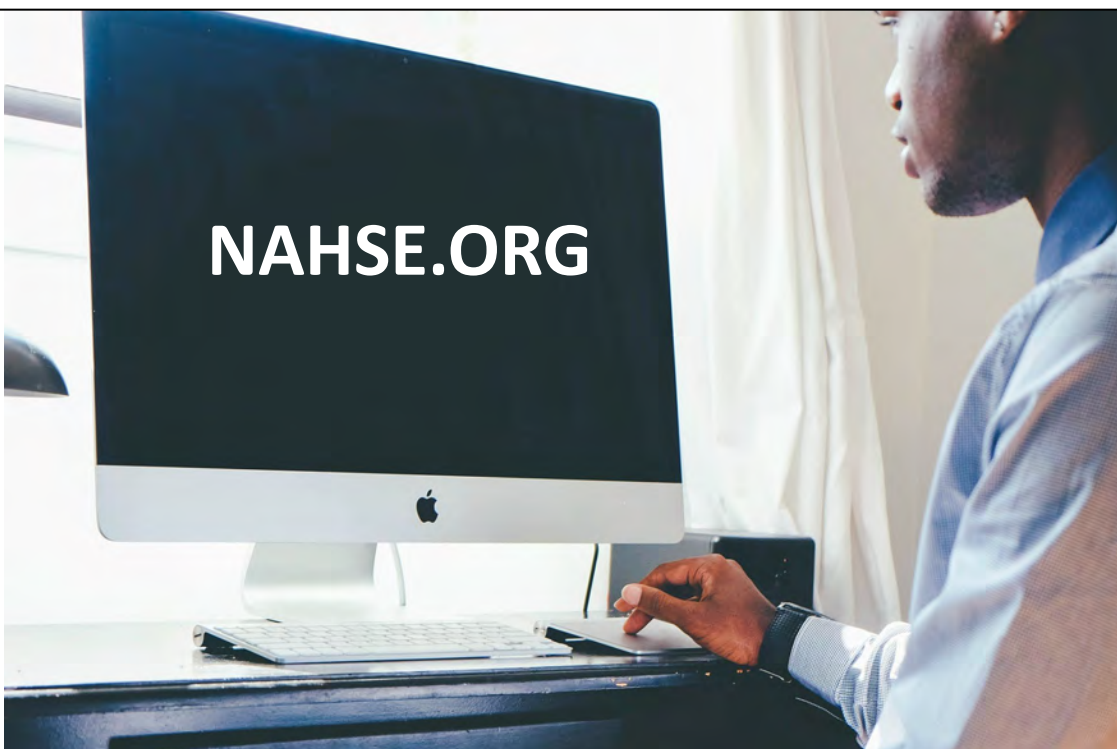
**National Association of
Health Services Executives**
Empowering the Next Generation
of Health Care Leaders Today

MEMBERSHIP

By becoming a member of NAHSE, you can actively participate in enhancing your career. NAHSE strives to serve as a vehicle by which Black health care leaders can help improve the health status, economic opportunities, and educational advancement of the communities we serve.

You too can be a part of this vehicle of opportunity. NAHSE offers special membership types for current executives, students, and organizations.

Call us TODAY! 202.772.1030



Veterans Affairs National Chapter Member receives ACHE Regent Award

Dr. Tiffany Love, Deputy Associate Director of Patient Care Services, Overton Brooks VA Medical Center in Shreveport, LA

Submitted by Jasline Knox, MSHA, Chapter President of the VA NATIONAL (VETERAN AFFAIRS) Chapter



Photo Credit: David Bailey, Chapter President, Kentucky ACHE

Dr. Tiffany Love was awarded the Regent's Award for Chapter accomplishments in Diversity. Dr. Love is Deputy Associate Director of Patient Care Services at the Overton Brooks VA Medical Center in Shreveport, Louisiana and a member of the NAHSE Veterans Affairs (VA) National Chapter. Dr. Love created the inaugural Louisiana ACHE (LACHE) Diversity and Inclusion Committee in April of 2016. Her primary goal was to support ACHE in striving for excellence in leadership diversity. The purpose of the LACHE Diversity and Inclusion Committee is to achieve the organizational initiative to increase and sustain diversity in healthcare management. The committee has engaged in planning activities to promote cultural awareness, appreciation, and community outreach. With the strategic priority to increase and sustain diversity, goals were set to increase the number of women and racial ethnic minorities. Gender and racial ethnic goals were set based on Louisiana U.S. Census data. The goals were later expanded to

include the recruitment of physicians, nurses, and other clinical staff seeking progressive leadership roles.

Because of her efforts, there have been Louisiana statewide ACHE recruitment and social networking events at Natchitoches Regional Medical Center Natchitoches, LA November 11, 2016; CHRISTUS Shreveport-Bossier, LA June 2, 2017; and Rapides Women's and Children's Hospital Alexandria, LA July 28, 2017. These events have served as an opportunity to recruit new members as well as engage current senior executive community partners in promoting the ACHE credential to their leadership teams. These events have also been used as an opportunity to re-engage former members who have recently let their membership lapse.

As chair of the committee, Dr. Love used the success of the LACHE committee to demonstrate the benefit of having a Diversity

and Inclusion Sub-Committee added to the sub-committees of the Veterans Affairs ACHE Regent's Advisory Council (VA ACHE RAC). This created an opportunity to build coalitions and collaborate on diversity and inclusion efforts between the Department of Veterans Affairs and community partners. One example of a successful collaboration was when the ACHE Regent for U.S. Department of Veterans Affairs Robert McDivitt and President of LACHE Coletta Barret agreed to co-host the Fundamentals of Healthcare Management review course in New Orleans, LA June 24, 2017. The goal of the event was to offer a high quality low cost educational opportunity for aspiring healthcare executives who have had challenges preparing for the Board of Governors exam. The course was a success with 16 attendees, 7 of whom were VA employees attending for free. The class was representative of the diverse target audience the committee had hoped to engage.

Dr. Love was selected as a contributor for the Executive Diversity Career Navigator. This website has been shared with diverse healthcare executives nationwide to assist with navigating the unique challenges faced in healthcare leadership. She is faculty for the Harvard Medical School Career Advancement and Leadership Skills for Women in Healthcare Leadership workshop and has written articles for the LACHE and VA ACHE RAC newsletters in support of diversity in the c-suite.

In summary, her efforts have improved the diversity of the LACHE Board of Directors and Committee members actively engaged in board activities. It has expanded recruitment efforts across the region from Southern to Northern Louisiana and VA nationwide. She has also served as an ACHE mentor, mentoring diverse aspiring VA leaders not just within the state of Louisiana but nationwide. The two committees have gained momentum and continue to advance their goals to surpass the accomplishments of the year before.

Congratulations

DR. TIFFANY LOVE

Deputy Associate Director of Patient Care Services
Overton Brooks VA Medical Center
Shreveport, Louisiana



**National Association of
Health Services Executives**
Empowering the Next Generation
of Health Care Leaders Today







www.NAHSE.org



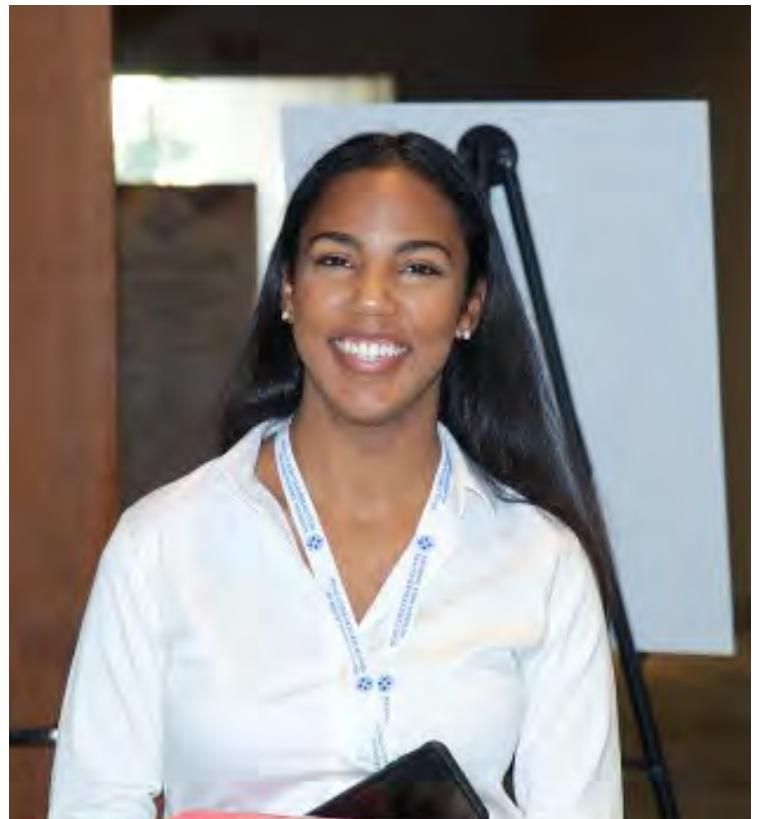
**National Association of
Health Services Executives**
Empowering the **Next Generation**
of Health Care Leaders Today





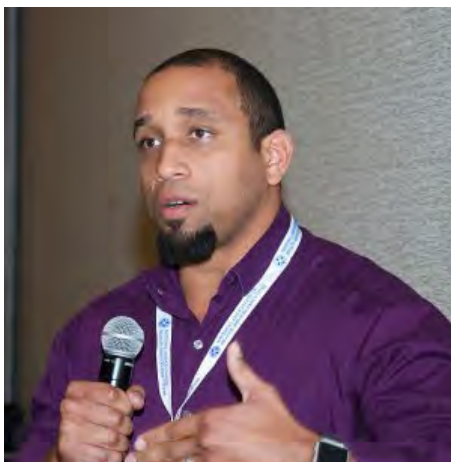






**National Association of
Health Services Executives**
Empowering the **Next Generation**
of Health Care Leaders Today









making a powerful difference NAHSE Professionals On The Move



Contact the NAHSE Notes Editorial
Office to submit your information:

1050 Connecticut Avenue, N.W., 5th Floor
Washington, DC 20036
bglover@nahse.org
ktucker@nahse.org



NAHSE Members and Friends,
It is such a pleasure to share great news of our
members with you...

Roy L. Hawkins, Jr., FACHE Senior Vice President & Chief Executive Officer Jackson North Medical Center



Jackson Health System named Roy L. Hawkins Jr. the senior VP and CEO of the 382-bed Jackson North Medical Center.

Hawkins, a Miami native, was recently COO of Johnston-Willis Hospital, with 292 bed facility in Richmond, Virginia that is part of CJW Medical Center. He helped the hospital achieve a record-breaking year for patient volumes and led it to achieve Comprehensive Stroke Center certification. Before that, Hawkins held executive positions in the Veteran Affairs health care system, including as interim CEO and COO of James A. Haley Veterans' Hospital in Tampa.

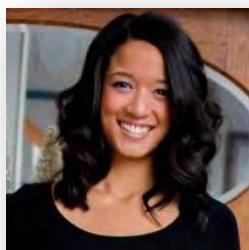
"We are so proud to have recruited Roy, a Miami native who not only knows but understands the medical needs of our community," said Carlos A. Migoya, president and CEO of Jackson Health System. "His widespread knowledge of healthcare, along with his strategic managerial skills, will no doubt push Jackson North Medical Center into an even brighter future."

Hawkins was born at Jackson Memorial Hospital, the flagship facility of the public health system. He graduated from Miami Carol City Senior High School, obtained a bachelor of business

administration from Howard University and a master of health administration from Florida International University.

"I am honored to return to Miami-Dade County, a place I proudly call home and humbled to have been selected to join the Jackson Health System team," Hawkins said. "I look forward to joining the dynamic team of healthcare professionals at Jackson North. It is a privilege to be part of this organization, a source of great pride in the Miami-Dade community that impacts the lives of hundreds of people every day."

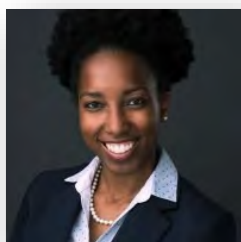
Rikki Takeyama Vice President of Strategic Operations St. Louis Regional Health Commission



Rikki Takeyama was promoted to Vice President of Strategic Operations, St. Louis Regional Health Commission. Rikki currently serves as the Membership Chair

for the NAHSE ST. Louis Chapter.

Brianna C. Clare, MHA 2018 Cleveland Clinic Administrative Fellow Cleveland Clinic



Brianna Clare has been chosen as the 2018 Cleveland Clinic Administrative Fellow.

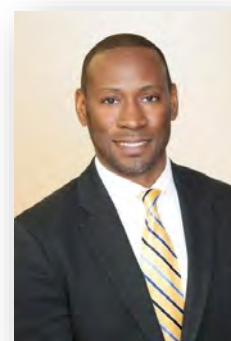
Brianna Clare, Master of Health Administration

student at Saint Louis University's College for Public Health and Social Justice, took on the role of student liaison for the St. Louis chapter of the National Association of Health Services Executives in December 2016.

A native of Bowie, Maryland, Brianna interned for the St. Louis VA Medical Center and the Department of Strategic Planning and Business Development Department at St. Luke's Hospital.

She serves as Student Liaison for the NAHSE St. Louis Chapter.

Andwele Jolly, DPT, MBA, MHA, OCS Business Director Divisions of Allergy & Immunology, Rheumatology and Hematology Washington University School of Medicine



Andwele Jolly, DPT, MBA, MHA, OCS was selected to the upcoming cohort for the Eisenhower Fellowship.

Andwele served as the NAHSE St. Louis Chapter President from 2012 through 2015.

HAPPY NEW YEAR



National Association of Health Services Executives National Chapters

ATLANTA

Chapter President
Briene M. Simmons, MHA
Manager
Centralized Scheduling
Children's Healthcare of Atlanta

BALTIMORE

Chapter President
Maha Sampath, MHSA, PMP
Chief of Staff
Bon Secours Baltimore Health System

CENTRAL TEXAS

Chapter President
Carlton G. Inniss
Senior Director of Clinical Operations
Austin Regional Clinic

CHICAGO-MIDWEST

Chapter President
Phil Burton
Managing Principle
The Exeter Group

CONNECTICUT

Chapter President
Fred Boateng
Office Coordinator Cardiology Central Region
Hartford HealthCare

DALLAS FORT-WORTH

Chapter President
Keith Plowden, MBA, MHA, FHFMA
Director
Labor Management & Clinical Analytics
Performance Effectiveness
CHRISTUS Health

DELAWARE VALLEY

Chapter President
Shonalie Roberts, MHA, ARM
Claims System Coordinator
Main Line Health

DETROIT

Chapter President
Valerie A. Gunn, MBA
Group Practice Director
Department of Surgery
Division of Cardiac, Thoracic and
Vascular Surgery
Henry Ford Health System

GOLDEN STATE CALIFORNIA

Chapter President
Andrea Swann
Strategy Implementation Manager
UCSF-Zuckerberg
San Francisco General Hospital

GREATER DENVER

Chapter President
Mario A. Harding, FACHE
Associate Chief Operating Officer
Denver Health Medical Center

GREATER NASHVILLE

Chapter President
Ryan Nelson
Director of Business Development
Guardian Healthcare Providers

HOUSTON

Chapter President
Carl McGowan
Regional Director
United Healthcare

KANSAS CITY REGIONAL

Chapter President
Brandie Gholson
Director of Physician Relations
Carondelet Long Term Care Facilities, Inc.

KENTUCKY

Chapter President
Adonna Bass Wickliffe
Director, Strategy & Business Development
KentuckyOne Health

MEMPHIS

Chapter President
Chara Stewart Abrams
Administrative Director
St. Jude Children's Research Hospital

NEW JERSEY

Chapter President
Vanessa Smith
CHRO & VP of Human Resources
RWJ Barnabas Health

NEW YORK REGIONAL

Chapter President
Abigail Nimako, MPH
Director
Outreach & Practice Development
Mount Sinai Health System

NORTH CAROLINA

Chapter President
Jhaymee Heinlein
Director, Strategy Management & Growth
Carolinas Healthcare System
Duke University Hospital

OHIO RIVER VALLEY

Chapter President
Venita Robinson
Clinical Research Coordinator III
Cincinnati Children's Hospital Medical Center

PITTSBURGH

Chapter President
Tonja Smith
CEO
Allegheny Community Home Care, LLC

SOUTH CAROLINA

Chapter President
Geoffrey Williams
Director
Palmetto Health Baptist

SOUTH FLORIDA

Chapter President
Grant McGaugh
Business Development Manager
Zones, Inc.

SOUTHEASTERN LOUISIANA

Chapter President
Brandon Darrington
Administrative Fellow
Tulane Medical Center

SOUTHERN CALIFORNIA

Chapter President
Shannon McClenton
Chief Administrative Officer
UCLA

ST. LOUIS

Chapter President
Brian Washington
Strategic Planning Associate
BJC Healthcare

VA NATIONAL (VETERAN AFFAIRS)

Chapter President
Naeemah Dyer, MSHA
Health Systems Specialist to the Director
VA Mid-South Consolidated Mail Outpatient Pharmacy

WASHINGTON METROPOLITAN AREA CHAPTER

Chapter President
Deon Norals
President and CEO
iHealth Innovative Solutions

WESTERN MICHIGAN REGION

Chapter President
David S.A. Barnes
Barnes & Chase LLC



National Association of
Health Services Executives
Empowering the Next Generation
of Health Care Leaders Today

