

A Publication of the National Association of Health Services Executives

# NAHSE

**NOTES**

EMPOWERING THE NEXT GENERATION OF HEALTH CARE LEADERS TODAY! 2017 SUMMER ISSUE

## SAVE THE DATE

32ND ANNUAL EDUCATIONAL CONFERENCE &  
22ND ANNUAL EVERETT V. FOX STUDENT CASE COMPETITION

**OCTOBER 17-20, 2017**

**GRAND HYATT SAN ANTONIO**

600 E MARKET STREET | SAN ANTONIO, TX 78205

## Inside The Issue

President's Welcome

National Leadership

NAHSE National Chapters

NAHSE Committees

Membership

National Issues

Political & Social Issues

Professionals On The Move

# Here's To Your Success

Greetings NASHE Members and Friends:

Summer is upon us, and your association continues to move forward. NASHSE successfully hosted the second annual C-Suite Leadership Experience on May 25-28th at the Hyatt Regency Scottsdale Resort & Spa at the Gainey Ranch, Scottsdale, Arizona.

The theme was "The Black Healthcare Leadership Journey: Being Authentically You". This theme was positively demonstrated by the exceptional list of speakers including, Hill Harper and our own Lloyd Dean. It was an excellent learning opportunity under a picturesque setting.

NASHSE continues to move the goals and objectives forward from the Winter Strategy meeting. To assist the association in moving the agenda forward, we have engaged Al Campbell in a consultative capacity to provide support toward the achievement of these goals. He will provide assistance primarily in the areas of fund development, infrastructure analysis and operational assessment. Please join me in welcoming Al to the team.



Anthony King, FACHE, MHSA  
National President  
NASHSE

Finally, in an effort to continue our advocacy discussion, I must report that the US House of Representatives did approve the American Health Care Act (AHCA) after an initial failure. As previously stated, this law, if fully enacted, would result in the loss of coverage to over 24 million Americans. This law now goes before the Senate, who has taken the opportunity to develop their version with the desired goal of approving it prior to July, 2017. Let us do all that we can to encourage our government to support the care of its citizens and, I encourage us as an association to continue to advocate for those who have no voice.

NASHSE continues to move forward. Let us boldly address the challenges ahead and stay vigilant to our mission of advancing executives of color and supporting the communities that we serve.

Respectfully,  
**NATIONAL ASSOCIATION OF HEALTH SERVICES EXECUTIVES**

**Anthony King, FACHE, MHSA**  
National President  
National Association of Health Services Executives

CEO & Executive Director  
The Wellness Plan  
Detroit, Michigan

## contents & special features

### On The Cover

Grand Hyatt San Antonio and Downtown Skyline  
Home to the 32nd Annual Educational Conference, &  
22nd Annual Everett V. Fox Student Case Competition

### Inside Stories

**C-Suite Leadership Experience**  
2017 Special Sponsor Thank You

**Calvin T. Wright, MHSA, FACHE**  
Joins Intalere as Sr. VP, Solutions Management

**Library Welcomes New Collection**  
From health and civic leader John W. Bluford

**Event June 9 addresses opioid epidemic**  
NASHSE to host symposium at BJC Learning Institute

**James "Jay" L. Robinson, III, PsyD**  
Named President of Presence Saint Joseph Hospital-Chicago

**President's Welcome**  
**National Leadership**  
**NAHSE National Chapters**  
**NAHSE Committees**  
**Membership**  
**National Issues**  
**Political & Social Issues**  
**Professionals On The Move**



## Check [www.NAHSE.org](http://www.NAHSE.org) Get updates on local and national issues

The National Association of Health Services Executives newsletter, NASHSE Notes, is published quarterly (Spring, Summer, Fall and Winter) and includes information on the latest regulatory and legislative developments, as well as the quality-improvement and leadership trends that are shaping and influencing the hospital and health system field. Readers get in-depth reporting on the issues and challenges facing hospital and health system leaders today. We make it our job to tell about the great things the organization and Chapters are doing every day to ensure the health of our community.

Editorial guidelines are available upon request. Advertising rates may be obtained by contacting [nahsehq@NAHSE.org](mailto:nahsehq@NAHSE.org). Advertisements do not imply endorsement by NASHSE. No part of this publication may be reproduced in any form without written permission of the publisher. Opinions expressed in this publication do not necessarily reflect official policy of the National Association of Health Services Executives.

If you have any news and updates that you want to share with other members in an upcoming issue, please e-mail your items in Microsoft Word or another compatible format to [nahse@NAHSE.org](mailto:nahse@NAHSE.org). If you have a graphic or picture that you'd like to include, please send it as a separate file.

**[www.NAHSE.org](http://www.NAHSE.org)**  
1050 Connecticut Ave., N.W., 5th Floor Washington, DC 20036  
p: 202.772.1030 f: 202.772.1072  
[bglover@NAHSE.org](mailto:bglover@NAHSE.org) [ktucker@NAHSE.org](mailto:ktucker@NAHSE.org)

In the past, NASHSE Notes has included some of the following types of information: **Advocacy Issues, Legislative Issues, Promotions, Educational Opportunities, Awards, Achievements, Committee Updates, Journal Submissions, Participations, Business Opportunities, Mentoring Experiences, Workshops.**

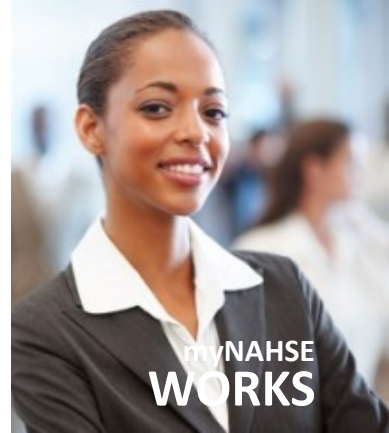
**Next submission deadline:**  
**5:00 p.m., Friday, August 4, 2017**



© 2017 NASHSE.org



**National Association of  
Health Services Executives**  
Empowering the Next Generation  
of Health Care Leaders Today



**National Association of  
Health Services Executives**  
Empowering the **Next Generation**  
of Health Care Leaders Today

**Contact The NAHSE Notes Editorial  
Office to submit your information:**

1050 Connecticut Ave., N.W., 5th Floor  
Washington, DC 20036  
p: 202.772.1030  
f: 202.772.1072  
e: bglover@NAHSE.org  
e: ktucker@NAHSE.org

# Empowering the **Next Generation** of Health Care Leaders Today **National Association of Health Services Executives** **EXECUTIVE COMMITTEE**



## **PRESIDENT**

Anthony King, FACHE, MHSA  
CEO & Executive Director  
The Wellness Plan  
Detroit, MI



## **SECRETARY**

Tracy Garland, MBA, MHSA  
Administrator  
Henry Ford Wyandotte Hospital  
Henry Ford Health Center-Brownstone  
Detroit, MI



## **AT-LARGE BOARD MEMBER**

Antionette Hardy-Waller  
Chief Executive Officer  
The Leverage Network, Inc.  
Chicago, IL



## **PRESIDENT-ELECT**

Richelle Webb Dixon, FACHE  
Missouri City, TX



## **PARLIAMENTARIAN**

Clinton B. Fields Jr., MS, MBA  
Director of Clinical Operations  
Department of Surgery  
Washington University School of Medicine  
St. Louis, MO



## **AT-LARGE BOARD MEMBER**

Corwin N. Harper, MHA, FACHE  
Senior Vice President,  
Area Manager/Hospital Administrator  
Kaiser Permanente Napa Solano Area  
Vallejo, CA



## **TREASURER**

Anthony Coleman  
Associate, Healthcare Operations  
Kaiser Foundation Health Plan, Inc.  
Bakersfield, CA



## **IMMEDIATE PAST PRESIDENT**

Roy L. Hawkins, Jr., FACHE  
Chief Operating Officer  
Johnston-Willis Hospital  
Richmond, VA



## **AT-LARGE BOARD MEMBER**

Joy D. Calloway, MBA, MHSA  
President & CEO  
New Center Community Mental  
Health Services  
Detroit, MI



## **GENERAL COUNSEL**

Clifford E. Barnes, Esq.  
Partner  
Epstein Becker & Green, P.C.  
Washington, D.C.



**National Association of  
Health Services Executives**  
Empowering the **Next Generation**  
of Health Care Leaders Today

# National Association of Health Services Executives Calendar of Events

WWW.NAHSE.ORG



**National Association of Health Services Executives**  
Empowering the **Next Generation**  
of Health Care Leaders Today

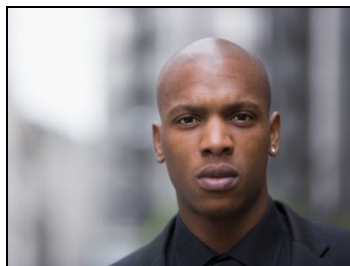
## GIVING

**JOIN NAHSE**



## INSPIRING

**RENEW YOUR MEMBERSHIP**



## ENCOURAGING

**BE ACTIVE IN YOUR CHAPTER**



## SUCCEEDING

**BECOME A LEADER**



### MISSION STATEMENT

The National Association of Health Services Executives is a non-profit association of Black health care executives founded in 1968 for the purpose of promoting the advancement and development of Black health care leaders, and elevating the quality of health care services rendered to minority and underserved communities.

### NAHSE NATIONAL 2016 MEETINGS

**NAHSE Executive Committee Conference Calls**  
**Tuesday, July 11, 2017**  
**Tuesday, September 12, 2017**  
**Tuesday, October 17, 2017**  
*(during NAHSE Annual Educational Conference in San Antonio, TX)*  
**Tuesday, December 1, 2017**  
*(during NAHSE Leadership Meeting in Orlando, FL)*

**Annual Leadership Retreat**  
**December 1-3, 2017**  
Hilton Orlando Lake Buena Vista  
Walt Disney World Resort  
1751 Hotel Plaza Blvd.  
Lake Buena Vista, Florida 32830  
  
*Call NAHSE for more information*  
1050 Connecticut Ave. NW, 5th Flr.  
Washington DC, 20036  
202-772-1030

### NAHSE EDUCATIONAL CONFERENCE

**32nd Annual Educational Conference & 22nd Everett V. Fox Student Case Competition**  
**October 17-20, 2017**  
Grand Hyatt San Antonio  
San Antonio, Texas  
  
*Call NAHSE for more information*  
1050 Connecticut Ave. NW, 5th Flr.  
Washington DC, 20036  
202-772-1030

## NAHSE 2017 Editorial Calendar and Advertising Information

### 2017 SPRING ISSUE

January / February / March  
**Artwork / Materials Deadline**  
January 27, 2017  
**Issue Released**  
March 1st

### 2017 SUMMER ISSUE

April / May / June  
**Artwork / Materials Deadline**  
April 28, 2017  
**Issue Released**  
June 1st

### 2017 FALL ISSUE

July / August / September  
**Artwork / Materials Deadline**  
August 4, 2017  
**Issue Released**  
September 1st

### 2017 WINTER ISSUE

October / November / December  
**Artwork / Materials Deadline**  
October 27, 2017  
**Issue Released**  
December 1st

The National Association of Health Services Executives newsletter, NAHSE Notes, is published quarterly (Spring, Summer, Fall and Winter) and includes information on the latest regulatory and legislative developments, as well as the quality-improvement and leadership trends that are shaping and influencing the hospital and health system field. Readers get in-depth reporting on the issues and challenges facing hospital and health system leaders today. We make it our job to tell about the great things the organization and Chapters are doing every day to ensure the health of our community.

Editorial guidelines are available upon request. Advertising rates may be obtained by contacting nahsehq@NAHSE.org. Advertisements do not imply endorsement by NAHSE. No part of this publication may be reproduced in any form without written permission of the publisher. Opinions expressed in this publication do not necessarily reflect official policy of the National Association of Health Services Executives.

If you have any news and updates that you want to share with other members in an upcoming issue, please e-mail your items in Microsoft Word or another compatible format to nahse@NAHSE.org. If you have a graphic or picture that you'd like to include, please send it as a separate file.



1050 Connecticut Ave., N.W., 5th Floor | Washington, DC 20036 | p: 202.772.1030 | f: 202.772.1072 | [www.NAHSE.org](http://www.NAHSE.org)

## Public health experts:

### Missouri needs to better track, treat opioid addiction

Reprinted with the permission of Durrie Bouscaren, St. Louis Public Radio



Pictured from left to right: Missouri state Rep. Cora Faith Walker, D-Ferguson, speaks on a panel held by NAHSE-STL. Affinia Healthcare Chief Operating Officer Kendra Holmes, criminologist Dan Isom, and anti-addiction advocate Howard Weissman join her. Photo credit Durrie Bouscaren, St. Louis Public Radio.

Public health experts on a panel in St. Louis Friday admonished Missouri lawmakers for failing to pass a prescription drug monitoring bill during the last legislative session. They also called for more treatment centers.

At least 712 people died after opioid overdoses in the bi-state St. Louis region last year — nearly 200 more than the year before, according to the anti-addiction group NCADA St. Louis. Missouri is the only state without a statewide database.

“It is absolutely cheaper to get high than to use the medications to treat addiction,” said Kendra Holmes, chief operating officer of Affinia Healthcare in St. Louis. “To not have a prescription drug monitoring program in

Missouri, and we have an opioid epidemic, does not make sense.”

The panel, convened by the St. Louis chapter of the National Association of Health Services Executives, covered local efforts to prevent the abuse of opioid drugs — heroin, fentanyl and pain pills — as well as racial disparities in treatment. While heroin addiction in the 1970’s was seen as an issue confined to poor, black neighborhoods, the largest cohort of addicts today are young, white men. Meanwhile, public concern — and funding for prevention efforts — has ballooned.

“This data should not be taken to say there is less heroin use in the inner city. It’s just been dwarfed,” said Dr. Ted Cicero, an addiction expert at Washington University in St. Louis.

It’s a welcome development for many in the addiction world, who felt their pleas had fallen on deaf ears for decades.

“Is it fair that we’re finally treating this as a public health problem when a generation of African American families had their doors broken down? No,” said panelist Howard Weissman, executive director of the anti-addiction group NCADA St. Louis. “But we’re hoping this is the tide that rises all ships.”

But there is a long ways to go, said Holmes, the pharmacist. Every two weeks, Affinia’s medication-assisted treatment program provides 20 patients with a daily suboxone prescription to alleviate symptoms of withdrawal. By the end of the 10-day course, just a handful of patients remain.

“With the population we treat, it’s really difficult because they’re going back to the same environment where people are using,” said Holmes, also a pharmacist. “There are treatment centers, but they’re at capacity. More treatment centers in low income areas are necessary and affordable treatment.”

During remarks before the discussion, Missouri Health Director Randall Williams said he will soon release a statewide plan to push naloxone, the overdose antidote, out to first responders.

“In North Carolina when we did that, we had more reversals than deaths,” Williams said, referring to the state where he most recently served as director of health and senior services. Others said there is some hope in the statistics. Eighth graders — the youngest cohort measured by the Monitoring the Future study — are less likely to use drugs other than marijuana at record lows. It’s a sign that the cautionary tale of this generation’s opioid epidemic could prevent future deaths.



**National Association of  
Health Services Executives**  
Empowering the **Next Generation**  
of Health Care Leaders Today

“Editorial guidelines are available  
upon request. **Contact NAHSE**  
TODAY for more information.”

**202.772.1030**

**Our research means  
sales leads for you**

Business Leads is designed to help you grow your business, increase your cash flow and keep you informed about what’s happening in healthcare.



# Thank You to Our 2017 Sponsors

NAVIGANT



## C-SUITE LEADERSHIP EXPERIENCE

*The Black Healthcare Leadership Journey:  
Being Authentically You*



**National Association of  
Health Services Executives**  
Empowering the **Next Generation**  
of Health Care Leaders Today



**May 25-28, 2017**  
Hyatt Regency Scottsdale  
Resort & Spa at Gainey Ranch  
Scottsdale, Arizona

Once again, NAHSE held another successful C-Suite Leadership Experience in Scottsdale, AZ. This year's theme, "The Black Healthcare Leadership Journey: Being Authentically You", addressed navigating a successful career while maintaining health, committing to a personal mission, and having a purposeful impact on the community.



2017 C-Suite Leadership Experience Attendees



Pictured left to right: Anthony King, Denise Brooks-Williams, Juliette Okotie-Eboh, Patricia G. Webb, and Richelle Webb-Dixon



Pictured left to right: Carolyn Caldwell, Pamela Sutton-Wallace, Ebbin Dotson, Ruth Brinkley, and Larry Warren



Pictured left to right: Patricia G. Webb and Lloyd Dean



Pictured: Hill Harper

## Back by Popular Demand;

### NAHSE Baltimore's regional mixer, conference and gala

Submitted by the NAHSE Baltimore Chapter

The NAHSE Baltimore Chapter will continue the tradition of educating, engaging and empowering minority health care professionals at its Regional Mixer, Conference & Gala on August 10 –11 at the Samuel Riggs Alumni Center – University of Maryland, College Park.

“Equity v. Reality: Is All Health Care Created Equal?” will be the theme for this year's experience, with an agenda focused on providing scholarships, networking opportunities and continued education and learning for participants.

More than 200 diverse health care professionals attended last year's event entitled, “The Progressive Journey: The Path Towards Population Health”, from over 30 health care organizations, insurers and schools from the east coast. The event provided attendees with the information they needed to be more effective in their careers, address population health opportunities and be innovators in their respective health care fields.

This year's Opening Mixer will allow participants to network prior to the conference. The health care conference will provide tools that speak to the anticipated changes in the current health care landscape as well as evaluate the downstream impact these efforts will have on all of our communities. The gala will serve as a platform where health care leaders, organizations, and 12 students will be recognized for their amazing accomplishments and contributions made within the Northeast Region.

The NAHSE Baltimore Chapter invites everyone and all organizations to consider supporting and attending the worthwhile event. The aim of the event is to Educate, Engage, & Empower All. With support from everyone, the Chapter will be sure to reach this goal!

For more information, contact, Darren Brownlee, President, NAHSE Baltimore Chapter at [dbrownlee@jhmi.edu](mailto:dbrownlee@jhmi.edu), [www.nahsebaltimore.org](http://www.nahsebaltimore.org), or <https://nahseregional2017.eventbrite.com>.

# Ignite the Night

Opening Mixer



NAHSE  
Baltimore

Thursday, August 10, 2017  
6pm – 9pm

Samuel Riggs Alumni Center

University of Maryland, College Park  
7801 Alumni Dr. College Park, MD 20742



## NAHSE Washington Metropolitan Area Chapter Hosted Its Annual

### Annual Minority C-Suite Executive Roundtable at the Renaissance Hotel

Submitted by the NAHSE Washington Metropolitan Area Chapter



On April 6th, the Washington Metropolitan Area Chapter held its Annual Minority C-Suite Executive Roundtable at the Renaissance Hotel in Washington, DC. The event's theme “Strategy, Innovation and Diversity in Action” attracted a sold-out crowd to hear a lively discussion among some of healthcare's luminaries. Panelists included Dr. Norvell Coots of Holy Cross/Trinity Health, Deborah Addo of INOVA, Dr. Trent Haywood of BlueCross Blue Shield Institute, and Manuel Tomas Leon of AHA's Institute for Diversity in Health Management. There was vigorous discussion around how to align organizations' missions around diversity initiatives, the importance of mentorship in building the pipeline of diverse leaders, the important role of leadership, and seeing diversity as a strategic imperative.

## Accomplished Healthcare Supply Chain Strategist Calvin T. Wright joins Intalere as Sr. Vice President, Solutions Management

Reprinted with the permission of Intalere | Evan Danis, Sr. Director, Corporate Communications | 724-778-3423 | [evan.danis@intalere.com](mailto:evan.danis@intalere.com)



Calvin T. Wright, MHSA, FACHE  
Intalere  
Sr. Vice President, Solutions Management  
Photo Credit: Intalere

Intalere, the healthcare industry leader in delivering optimal cost, quality and clinical outcomes, today announced Calvin T. Wright, MHSA, FACHE, has joined the organization as Sr. Vice President, Solutions Management.

In his new role, Wright has primary responsibility for the Intalere Solutions Management function, leading a team through the timely development and completion of all market-facing products to be included in Intalere's vast array of solutions. Wright works closely with internal and external resources to ensure all products conform to Intalere's high standards and serve the specific needs of the company's membership.

"We welcome Calvin's expertise in leading our efforts to work with our owner Intermountain Healthcare to drive internal savings and commercialize capabilities as identified," said Julius Heil, president and CEO, Intalere. "We also look forward to his leadership in engaging other opportunities to develop and provide best-of-breed solutions to our members."

Wright's extensive supply chain management experience includes multiple leadership positions held at Mercy Health, formerly known as Catholic Health Partners. Most recently, as senior vice president, resource management, Wright helped the company achieve more than \$100M in supply, purchased services and real estate savings over a period of three years. As chief resource officer, Wright was recognized for superior performance, including earning

the National Association of Health Services Executives (NAHSE) President's Award. During his tenure as vice president, supply chain management, Wright was recognized as one of the "Top Ten People to Watch" (2010) in the Journal of Healthcare Contracting. Also, notably, as director, supply chain management, he co-founded Catholic Contracting Group, a highly successful purchasing collaborative consisting of five of the largest Catholic health systems in the country.

Wright is actively involved in many state and national organizations and holds officer positions for Lincoln Heights Outreach, Inc., Xavier Health Services Advisory Board and Easter Seals of Tri State. He earned a Bachelor of Business Administration from Middle Tennessee State University and a Master of Health Services Administration from Xavier University.

### About Intalere

Intalere's mission focuses on elevating the operational health of America's healthcare providers by designing tailored, smart solutions that deliver optimal cost, quality and clinical outcomes. We strive to be the essential partner for operational excellence in healthcare through customized solutions that address customers' individual needs. We assist our customers in managing their entire spend, providing innovative technologies, products and services, and leveraging the best practices of a provider-led model. As Intalere draws on the power of our owner Intermountain Healthcare's nationally-recognized supply chain expertise and leadership in technology, process improvement, and evidence-based clinical and business best practices, we are uniquely positioned to be the innovation leader in the healthcare industry. Visit [www.intalere.com](http://www.intalere.com) to learn more.



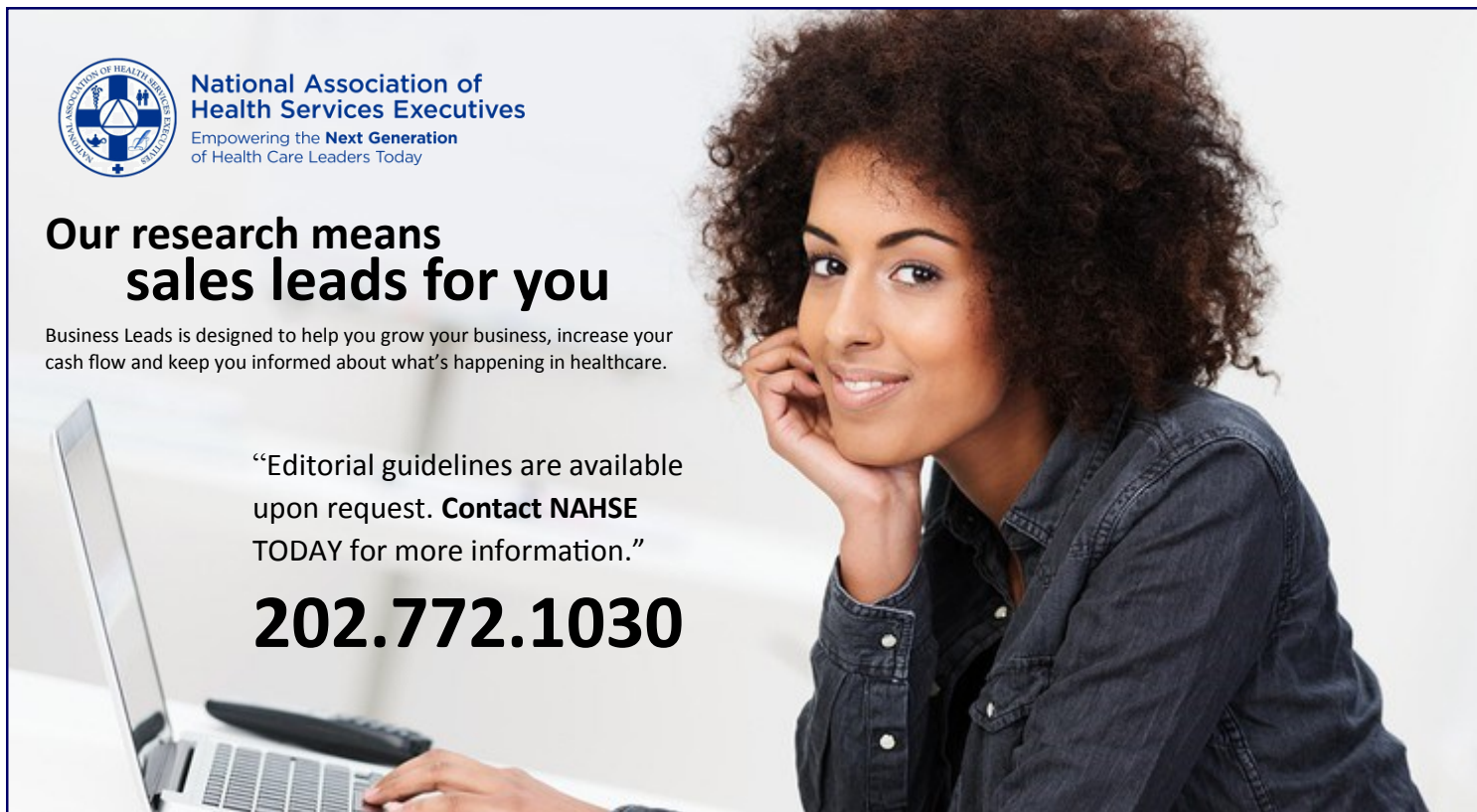
**National Association of  
Health Services Executives**  
Empowering the **Next Generation**  
of Health Care Leaders Today

## Our research means sales leads for you

Business Leads is designed to help you grow your business, increase your cash flow and keep you informed about what's happening in healthcare.

"Editorial guidelines are available  
upon request. **Contact NAHSE  
TODAY** for more information."

**202.772.1030**



## NAHSE Baltimore Chapter adopts national program for local tradition

Submitted By NAHSE Baltimore Chapter



Pictured left to right: Wande Kotun, Treasurer, Tameka Bell, Immediate Past President, Antoinette Williams, Member-at-Large, Maha Sampath, President Elect

After attending the annual Women's Forum at the NAHSE National Conference for a couple of years, Maha Sampath, now President-Elect for the NAHSE Baltimore Chapter, decided to bring such an edifying program to the local level. With that, the inaugural NAHSE Baltimore Chapter Women's Forum entitled "Heels in the Boardroom: Power, Potential, and Persuasion" was held in April of 2015 under Maha's leadership.

Women (and men) were invited to enjoy brunch and a panel-style discussion with local health care leaders who happened to be women. The event addressed gender gaps in the boardroom, the idea that femininity should be sacrificed in order to 'make it,' and what it meant to be a female leader in a racial minority group. After overwhelmingly positive reviews of the event, the NAHSE Baltimore Chapter knew that it was paramount to continue annual programming for current and aspiring women in leadership.

The 2nd Annual Women's Forum was no less successful than the first. Led by Wande Kotun, current NAHSE Baltimore Treasurer, the event cleverly coincided with Women's History Month, and was held in March of 2016. Though year two had a similar panel-discussion format, the panel was intentionally diversified to include professionals who touch health care from philanthropic and entrepreneurial points of view. The event, entitled, "HERStory: Our Version. Our Vision. Our Victories," allowed attendees to connect on a deeper level, networking and building commonalities through their personal stories. What began as a light Saturday brunch morphed into an intimate discussion among women of different ages, professional levels, and races about common struggles, strengths, and most importantly, stories.

March 25, 2017 marked the third annual event. This year, the planning committee wanted to explore what it truly meant to have "A Seat at the Table." Anne Palmer, entrepreneur, clarity expert and Amazon best-selling author, joined this year's attendees to share her strategies on how to understand the unique gifts we possess and bring to the table as well as the basic strategies to get a seat at the 'right' table. Following the simple question, "Did you wake up this morning?," the attendees walked away with a level of introspection, but also tools on finding purpose, vision, and creating a strategy for how to ensure mindful presence at every table.

The inaugural event was only the beginning of what is now an expected, impactful tradition that women in Baltimore and the DMV look forward to each year. We hope that you will join the NAHSE Baltimore Chapter in March 2018 as we continue to Educate, Engage, and Empower our leaders and our community.



## NAHSE St. Louis Chapter partners with Saint Louis University

students and faculty on CASE Competition Seminar

Submitted by the NAHSE St. Louis Chapter

The NAHSE St. Louis Chapter partnered with Saint Louis University students and faculty members to create and host a three-part educational seminar in preparation for national health care case competitions. The sessions were held at Saint Louis University during the 2017 spring semester and each session was an hour and a half in length. Faculty and NAHSE St. Louis Chapter members helped students gain a better understanding of how to apply operations, finance, and project management to problems presented in cases. By leveraging the skills of NAHSE members and creating programming that directly promotes the growth of future health care leaders, NAHSE St. Louis was able to introduce over thirty students to NAHSE, the mission and vision lived by our NAHSE members, and many opportunities afforded by securing a student membership and active involvement in the chapter.



## NAHSE Delaware Valley Chapter collaborates

### with the Health Career Academy!

Submitted by the NAHSE Delaware Valley Chapter



NAHSE-DVC HCA volunteers at the final program held at Main Line Health's Lankenau Medical Center in Wynnewood, PA. Pictured from left: Kenneth Munroe, Shonalie Roberts (President-Elect), Jourdon Robinson, Reyna Florentino (President), and Carlton Alouidor.

Started in 2008 by Dr. Barry Mann, Chief Academic Officer for the Main Line Health System in Wynnewood, PA, the Health Career Academy (HCA) brings to the classroom a team of health care professionals, physicians,

public health educators, school administrators, teachers, and students. The mission of the HCA is to provide mentorship, engaging health curriculum, and exposure to health careers to high school students from low-income, underrepresented minority communities.

This past year, the Delaware Valley Chapter of NAHSE DVC Chapter collaborated with the HCA to expose Philadelphia-area high schoolers to the diversity of careers in health care administration. NAHSE-DVC supports the HCA by adding brilliant health care administrators and health care management professionals who build on the academy's existing diversity of knowledge and expertise. At the Philadelphia level, volunteer medical students from four local medical schools lead the HCA curriculum for 10th, 11th and 12th grade. NAHSE DVC volunteers emphasized the value of college education and the importance of professionalism, personal development and networking. Annually, the HCA's culminating program features student presentations and live skits on the health care topics affecting school-aged children and the larger community.

The HCA has now successfully expanded to 10 US cities, including Philadelphia, Atlanta, Houston, Austin, Oakland, Durham, Boston, Chicago, Los Angeles, and Gwinnett County. If a NAHSE Chapter would like to partner with a local arm of the HCA, send an email to [infonahse@gmail.com](mailto:infonahse@gmail.com) for more information.

# Chat & Chew

FREE Networking Event  
In a city near you!

Your opportunity to meet with Chapter leadership about the upcoming elections and getting involved!  
Visit [www.nahsedvc.com/chat-and-chew](http://www.nahsedvc.com/chat-and-chew) and **RSVP** today!

**DE** | **Firestone Roasting House** **06.01.17**  
110 West St., Wilmington, DE 19801

**PHL** | **A's Place** **06.15.17**  
3722 Main St., Philadelphia, PA 19127

**NJ** | **Benihana Cherry Hill** **06.29.17**  
5255 Marlton Pike W, Pennsauken Township, NJ 08109

**Times:**  
**6pm - 8pm**



National Association of  
Health Services Executives  
Delaware Valley Chapter

## NAHSE Washington Metropolitan Area Chapter Congratulations

### winners of the Inaugural Health Care Innovation Competition

Submitted by the NAHSE Washington Metropolitan Area Chapter



A special congratulations goes out to the winning team from the NAHSE Washington Metropolitan Area Chapter's Inaugural Healthcare Innovation Competition. The team included Elizabeth Inyang, Trang Vu, and Grace Lacayo, all masters students in the Health Systems Administration program at Georgetown University.

Their winning solution? A software system to automatically flag, track, and manage 'frequent flyer' patients to emergency departments. The system would integrate with any major electronic health record and collect patient data to help manage the care of repeat patient visitors.

The Chapter sends congratulations to a talented group of students and future healthcare leaders.

# The Gala

## at the Riggs

Cocktail Reception 6:30pm | Program Start 7:30pm

**Friday, August 11.2017**  
Samuel Riggs Alumni Center  
University of Maryland, College Park  
7801 Alumni Dr. College Park, MD 20742



# NAHSE

Baltimore

## NAHSE Washington Metropolitan Area Chapter

### first annual Hill Day in Washington, DC

Submitted by the NAHSE Washington Metropolitan Area Chapter



On Tuesday, May 23, 2017 NAHSE-WMAC held its first annual "Hill Day." Members of NAHSE met with key government stakeholders to discuss pressing healthcare issues affecting communities of color. NAHSE-WMAC met with Rep. Michael Burgess (R-TX), Sen. Debbie Stabenow (D-MI), Sen. Mike Enzi (R-WY), Sen. Bill Cassidy (R-LA), and Rep. Joe L. Barton (R-TX).

NAHSE members took the opportunity to discuss concerns regarding the repeal of the Affordable Care Act, the opioid crisis and its impact on communities of color, and funding for safety-net hospitals that provide access to quality healthcare services in underserved communities.

Hill Day was spearheaded by health law attorney Stephanie D. Willis, NAHSE-WMAC's Law & Public Policy Committee Chair.

## Keeping black health executives in St. Louis

Reprinted with the permission by Chris King, The St. Louis American, May 18, 2017



Pictured from left to right: Leslie Hardy, Karen Morrison and Carmel Hannah, Chapter President, visited at the St. Louis Chapter of the NAHSE Spring Kick-Off at the Missouri History Museum

The St. Louis Chapter of the National Association of Health Services Executives (NAHSE) has a long game – they are trying to improve health equity in the region by helping to attract, support and retain black health professionals – but, in the short term, the group has a health disparities symposium it wants the community to attend.

The St. Louis Chapter of NAHSE will present its 5th annual Health Disparities Symposium, “Opioid Epidemic: A Community-Based Approach to Curtailing Supply & Demand,” 7:30 -9 a.m. Friday, June 9 at BJC Learning Institute (Lower Level Auditorium), 8300 Eager Rd.

The keynote will be delivered by Theodore J. Cicero, professor of psychiatry at the Washington University School of Medicine. Panelists include Kendra Holmes, chief operating officer, Affinia Healthcare; Daniel Isom II, endowed professor of policing and the community at University of Missouri-St. Louis; state Rep. Cora Faith Walker (D-Ferguson); and Howard Weissman, executive director of NCADA, which works to reduce or prevent the harms of alcohol and other drug use through education, intervention and advocacy.

April Mickens Jolly, communications chair for the chapter (and program manager for Barnes-Jewish Hospital’s Comprehensive Stroke Center), said that opioid addiction may be getting more attention now that more white

people are effected, but the health crisis still has a disparate impact by race.

“It’s an American problem, not relegated to certain demographics, but it does have a disparate impact depending on where you live and what resources are available to you,” Mickens Jolly said. “If you live in a neighborhood with no access to rehabilitation, or to care in general, who exactly would help you to overcome this battle?”

The symposium is free and open to the public, but the 60 members of the St. Louis Chapter of NAHSE could themselves confront the crisis from just about every angle.

“Our membership includes the leadership of hospitals, health centers, professors, vendors, consultants,” Mickens Jolly said. “If it touches health care, someone in NAHSE does that.”

Chapter President Carmel Hannah, who is manager for diversity and inclusion in Barnes-Jewish Hospital’s Center for Diversity and Cultural Competence, acknowledged that the chapter membership number of 60 is modest in itself. But she pointed out that the chapter was reinstated in 2011 (after being founded in 1993 and lapsing some time before 1998), is the fastest-growing chapter among 28 nationwide and was named the 2015 Chapter of the Year by the national association. The current national president is Anthony King, CEO and executive director of the Wellness Plan in Detroit.

The St. Louis Chapter was rechartered with seed funding from regional powerhouses in the health field – BJC HealthCare, Washington University School of Medicine, Barnes-Jewish Hospital and St. Louis Children’s Hospital – “because they could see our vision and the need for our group to thrive,” Mickens Jolly said.

That mission, according to the national association, is “promoting the advancement and development of black health care leaders and elevating the quality of health care services rendered to minority and underserved communities.”

“Our mission is not limited to patient care,” Hannah said. “In any situation where anyone is seeking health resources, we want a seat at the table. Our question is always is: Do we have the right individuals in the room to communicate

the needs the patient has and the challenges that person faces in receiving resources?”

To have “the right individuals in the room,” they need to be in the region. As black professionals transplanted to St. Louis, a region often criticized by transplants for its insularity and diffidence towards newcomers, Hannah and Mickens Jolly see their chapter as a network that can bring new executives to St. Louis and help keep them here.

“Whenever we hear an institution is having trouble finding diverse candidates, we want to know, ‘Who did you ask? Where are you looking?’” Mickens Jolly said. “NAHSE can fill a void. We can spread the word. We’d love to get to the day where we no longer hear, ‘We just can’t find a diverse pool of leadership candidates.’ We know we’re here. You just need to connect.”

Once a black health executive gets here – Rick Stevens, the relatively new president of Christian Hospital is one newcomer to the local NAHSE chapter – the NAHSE network can help to keep them here.

“We are a support system when leaders come here,” Hannah said. “We give them a safe place for conversations you can’t always have at work. We invite provocative questions. We want people to ask questions specifically as a health administrator who is a person of color. We want to keep people here.”

These two black professional transplants want to stay here now – which is not how they always have felt. Mickens Jolly is in her second stint in St. Louis, after not enjoying her first stay and leaving as fast as she could. She then followed her husband, whom she met as an undergraduate at Washington University, after he received an attractive position here.

“It’s really an exciting time to live here,” Mickens Jolly said. “It’s an exciting place to be. I feel like we can make some progress here. Collective action can change things. I didn’t feel that way when I was at Wash. U.”

“We’re making an investment in how we want the community to look,” Hannah said. “It might not look the way you want it to look, but we want the future to look different than it looks today.”

join today

Be a part of myNAHSE

www.NAHSE.org



**October 17-20, 2017**

**Grand Hyatt San Antonio  
San Antonio, Texas**



**National Association of Health Services Executives**

**32<sup>nd</sup> Annual Educational Conference &  
Everett V. Fox Student Case Competition**

**SAVE THE DATE**

**Our research means  
sales leads for you**

Business Leads is designed to help you grow your business, increase your cash flow and keep you informed about what's happening in healthcare.

Advertise **TODAY** and  
reach thousands in healthcare  
202.772.1030

**>> Log onto [NAHSE.org](http://NAHSE.org) to learn more**



## 4th Annual Second Look for Minority Scholars in Medicine Program

hosted by the NAHSE Greater Denver Chapter, partnered with the University of Colorado School of Medicine (UCSOM)

Submitted by the NAHSE Greater Denver Chapter



On February 2, 2017, the NAHSE Greater Denver Chapter partnered with several healthcare organizations including the University of Colorado School of Medicine (UCSOM) to host a reception at the Blair Caldwell African American Library.

The goal was to support the School of Medicine's commitment to training a diverse physician workforce. Each department hosted minority candidates for a return visit to the individual programs.

Over 100 attendees joined prospective medical residents, hosted by Dr. Shanta M. Zimmer, Associate Dean for Diversity and Inclusion, at UCSOM.

Pictured left: Mario Harding, NAHSE Greater Denver Chapter President, sharing about NAHSE with attendees.

## Tony Jones, FACHE, Interim Executive VP of Operations at Catholic Health Initiatives

served as a guest speaker and presented "Leading A Hospital Turnaround: A Prescription for Success" at the Chapter's meeting

Submitted by the NAHSE Greater Denver Chapter



Pictured: Tony Jones, FACHE, Interim Executive VP of Operations at Catholic Health Initiatives



Pictured left to right: Mario Harding, NAHSE Greater Denver president, and J.J. Rams, Healthcare Division Manager at Haselden Construction



Pictured left to right: Mario Harding, NAHSE Greater Denver president, and Patrick Green, NAHSE Greater Denver immediate past president

On March 16, 2017, the NAHSE Greater Denver Chapter held its meeting at the Catholic Health Initiatives (CHI) headquarters in Englewood, CO. Tony Jones, FACHE, Interim Executive VP of Operations at Catholic Health Initiatives, served as a guest speaker and presented "Leading A Hospital Turnaround: A Prescription for Success". Tony shared his expertise and knowledge of navigating hospitals and health systems from financial turmoil to success as well as advice to leaders and managers.

During the Chapter meeting, J. J Rams of Haselden Construction was recognized for his company's support to the NAHSE Greater Denver Chapter by hosting membership and social events in their hospitality suite during the Denver Nuggets basketball games. Haselden has been an institutional member of NAHSE since 2014.

Denver immediate past president, was acknowledged for his contributions and leadership as chapter president at the March 22nd Denver Nuggets game.

Also during the meeting, Patrick Green, FACHE, NAHSE Greater

## CAHE, HFMA, and NAHSE Greater Denver Chapter hosted

partnered to host the annual Student Professional Night

Submitted by the NAHSE Greater Denver Chapter

On May 18, 2017, the Colorado Association of Healthcare Executives (CAHE), Healthcare Financial Management Association (HFMA) Colorado and NAHSE-Greater Denver Chapter partnered to host the annual Student Professional Night at the Nighthorse Campbell Building on the University of Colorado Anschutz Medical Campus. The event was attended by 25 graduate students pursuing MHA/MBA degrees from local colleges and universities.



Mario Harding presenting with Cherlye Powell (HFMA) and Mark Stevenson (CAHE) on "How to Prepare Yourself for a Job in Healthcare Administration/Management."



Pictured: Jennifer Alderfer, FACHE, CEO, North Suburban Medical Center; Dr. Tamara Brickham Bourda, Ph.D., Director, Healthy Communities, Catholic Health Initiatives; Patrick L. Green, FACHE, Senior Executive Vice President and Chief Administrative Officer at St. Anthony's Hospital; Jerome T. Henry, MBA, MHA, Independent Consultant; Dr. Daniel (Dani) C. Kimlinger, Ph.D., CEO, MINES and Associates; and Richard T. Prestige, MBA, MHA, Controller, Colorado Hospital Association.



Pictured: Deborah Lee-Eddie, Interim Leader/Consultant, participated as a resume reviewer.

## NAHSE St. Louis Chapter Holds 2nd Annual Administrative Fellowship Dinner

at SqWires Restaurant and Annex

Submitted by the NAHSE St. Louis Chapter

On April 27, 2017, the NAHSE St. Louis Chapter held its 2nd Annual Administrative Fellowship Dinner at SqWires Restaurant and Annex. Connecting at the student level is important to the Chapter and this event is the Chapter's marquee event for making this connection. The purpose of this event was to provide students with valuable insight into administrative fellowships in how to effectively approach the opportunity so they get the most out of their experience.

Insight was provided at two levels: current/former fellows and administrative fellowship preceptors including Rick Stanton, Associate Vice Chancellor, Washington University School of Medicine and Rick Majzun, Vice President, Operations, St. Louis Children's Hospital and Vice President, Women and Infants, Barnes-Jewish Hospital. Students not only had the opportunity to learn from current preceptors and those who have experienced interest in a fellowship, they also had the opportunity to network with each other and build new relationships.

The event held over 60 attendees, 45 of which were student attendees and represented various degrees including MHA, MPH, and MBA students. Universities represented included Washington University, Harris-Stowe State University, St. Louis University, University of Missouri-St. Louis, and Lindenwood University.



© Marriott

Reprinted with the permission of the Marriott



© Marriott

Reprinted with the permission of the Marriott



© Marriott

Reprinted with the permission of the Marriott



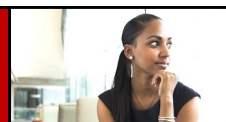
© Marriott

Reprinted with the permission of the Marriott

join today

Be a part of myNAHSE

[www.NAHSE.org](http://www.NAHSE.org)



## Library welcomes new collection of materials

from health and civic leader John W. Bluford

Reprinted with the permission by Alisa Smith, COO, Bluford Healthcare Leadership Institute, (816) 404-3633 and Courtney Lewis, Kansas City Public Library (816) 701-3669 | Tuesday, June 6, 2017

The Kansas City Public Library is unveiling a special new collection donated by former Truman Medical Centers CEO John W. Bluford – personal papers and other effects reflecting his contributions over a more than four-decade career to the American healthcare system. The materials, dating from the 1970s through this year, are part of the Library's Missouri Valley Special Collections, housed in the downtown Central Library's fifth-floor Missouri Valley Room. Ranging from reports and case studies to correspondence, photographs, newspaper and magazine articles, awards, and ephemera, the items chronicle Bluford's early work in healthcare in Chicago and Minneapolis, his transition to Kansas City and Truman Medical Centers, his retirement nearly three years ago, and a legacy that continues to grow. He currently serves as president of the Bluford Healthcare Leadership Institute, which he founded in 2013 to recruit and prepare minority college students for executive careers in healthcare.

"The collection is a fairly complete chronology of activities, events, programs, and successes that I have influenced through the partnership of a number of dedicated staff, supporters, communities and public entities," Bluford says.

Among those achievements: the development of school-based health clinics, the addition of a

U.S. bank location for TMC patients and employees, the elimination of fast-food offerings, and the opening of an art gallery in the medical center. The materials also spotlight improvements to trauma centers, emergency rooms, cardiology units, birthing center, and radiology and orthopedic departments.

"My hope," Bluford says, "is that by offering exposure to these creative programs, others will be inspired to 'think outside of the bed' and explore innovation in healthcare and inspire the future of others."

Missouri Valley Special Collections Manager Jeremy Drouin welcomes the gift. "Often the papers of many important individuals and institutions are lost to history because they never find their way to a library or archives," he says. "We are grateful to Mr. Bluford and the Bluford Healthcare Leadership Institute for entrusting us with his professional papers, ensuring that they are preserved and available to future generations of scholars."

Bluford led Truman Medical Centers for 15 years and now serves as president emeritus, earned national acclaim for the transformation of an urban hospital into one of the premier healthcare facilities in Kansas City. Under his watch, the not-for-profit system increased annual net revenue by \$283 million and

invested more than \$400 million in capital improvements and technology. Bluford oversaw enhancements to cardiology, radiology, emergency, diabetes, and operating facilities at Truman's downtown Hospital Hill location. Improvements at its Lakewood hospital include a new outpatient surgery center, additional inpatient beds, and a new emergency department and birthing center.

His civic contributions also are noteworthy: a year as chairman of the Greater Kansas City Chamber of Commerce, his support through Truman of a proposed grocery store in the "food desert" neighborhood around 27th and Troost, and his creation of the Bluford Healthcare Leadership Institute. Bluford is past chairman of the American Hospital Association, the National Association of Public Hospitals, and the Missouri Hospital Association, and was recognized by Modern Healthcare magazine as one of the most influential people in his field.

The donation of his collection to the Kansas City Public Library "will offer broad exposure of its content to members of our community," he says. "The projects exhibited have had an impact on our community members. ... I am hopeful that those viewing the collection will be encouraged to make an impact on the lives of others, as well."

# Equity v. Reality:

Is All Healthcare Created Equal?

Friday, August 11, 2017  
8:30am-3:00pm

Samuel Riggs Alumni Center  
University of Maryland, College Park,  
7801 Alumni Dr. College Park, MD 20742



NAHSE  
Baltimore

Regional Conference



**National Association Health Services Executives**  
South Florida Chapter  
presents

# Demystifying ACA:



## Repeal, Replace, Repackage?

**June 20, 2017 5:30PM - 8:00PM**

**BROWARD HEALTH MEDICAL CENTER - AUDITORIUM A-C**  
**1600 SOUTH ANDREWS AVENUE, FORT LAUDERDALE, FL 33316**

Join NAHSE South Florida for a compelling Tuesday evening as you listen in on an informative and insightful conversation between healthcare leaders with diverse perspectives - purchasing, operational, research and policy.



**Carl Taylor**  
SVP of Unified Physician  
Management, Executive Director  
Frederic Institute for Health and  
Risk Analytics & CEO XCH, LLC



**Ozzie Delgado**  
Chief Operating Officer at  
Cleveland Clinic Florida



**Marc A. Love**  
Vice President of Managed Care  
Operations for PHP, a Medisare  
Advantage HMO and PHC, a  
Medicaid Managed Care HMO



**Jarrett R. Lewis**  
Research & Policy Director, The  
Health Management Academy

**Gain insight on the present impact of ACA to your organization and how potential changes to ACA will inform you on the necessary next steps for the long-term viability of your organization.**

Come out and enjoy an evening of engaged networking, savory hors d'oeuvres and informed insight!

**GENERAL ADMISSION: \$40.00**  
**NAHSE MEMBER ADMISSION: \$25.00**

**[www.nahsesouthflorida.org](http://www.nahsesouthflorida.org)**

**SCAN or CLICK**  
**To RSVP NOW** ➡





## making a powerful difference NAHSE Professionals On The Move



Contact the NAHSE Notes Editorial  
Office to submit your information:

1050 Connecticut Avenue, N.W., 5th Floor  
Washington, DC 20036  
bglover@nahse.org  
ktucker@nahse.org



NAHSE Members and Friends,  
It is such a pleasure to share great news of our  
members with you...

### Cynthia Washington Interim AHA Institute for Diversity President



American Hospital Association has appointed Cynthia Washington to serve as interim IFD President. Her appointment is effective Tuesday, May 23, 2017.

Cynthia has been working closely with the Institute for many years in her role in Member Relations collaborating with emerging leaders across the field. Most recently, Cynthia has played an integral role in the AHA's partnership with the National Urban League.

### James "Jay" L. Robinson III, PsyD President Presence Saint Joseph Hospital-Chicago



Presence Health, the largest Catholic health care system in Illinois, today announced the appointment of James "Jay" L. Robinson III, PsyD, as the new President of Presence Saint Joseph Hospital-Chicago (PSJH-C).

Robinson has 20-plus years of experience as a leader in hospital administration and clinical operations. In his most recent position, Robinson was Senior Vice President/CEO at Methodist South Hospital, a 145-bed community hospital in Memphis, Tenn. that is part of Methodist Le

Bonheur Healthcare System. While there he improved associate satisfaction to the 98th percentile, improved patient satisfaction by 9 percent and decreased the readmission rate by 12 percent.

Prior to this role, Robinson was CEO/Medical Center Director at the Memphis Veterans Affairs Medical Center (VAMC) in Memphis, Tenn.

The VAMC is a 244-bed tertiary care teaching facility with a budget of \$415 million that serves more than 55,000 veterans per year. While there, he implemented an alternative dispute resolution process, realized 5 percent growth in volume and improved veteran and employee satisfaction.

Robinson previously served as CEO/Medical Center Director at Carl Vinson Veteran Affairs Medical Center (VAMC), a 340-bed medical/surgical facility, in Dublin, Ga. From 2001 to 2004, Robinson held the position of Chief, Mental Health and Behavioral Sciences, at Salisbury Veteran Affairs Medical Center (VAMC) in Salisbury, N.C. Robinson earned a Bachelor of Arts in psychology at University of Georgia in Athens, Ga., and a Doctor of Psychology at Virginia Consortium for Professional Psychology in Norfolk, Va. He is also a member of the American College of Healthcare Executives and National Association of Health Care Service Executives. Robinson joins Presence Health on Monday, June 12, 2017 succeeding PSJH-C Interim President Martin Judd.

**About Presence Saint Joseph Hospital-Chicago**  
Presence Saint Joseph Hospital is an award-winning academic medical center on Chicago's north side overlooking the shores of Lake Michigan and Lincoln Park. Established in 1868, Presence Saint Joseph has grown with the

community and is known for advanced care in cardiology, headache, cancer care, cardiac care, minimally invasive surgery, plastic surgery, neonatal care and treatment of HIV and its complications. Dedicated to delivering an exceptional patient experience, Presence Saint Joseph is recognized as one of the best hospitals in Chicago by U.S. News & World Report, is "A" rated by The Leapfrog Group and was Chicago's only 2014 Truven Health Top 50 Cardiovascular Hospital.

### About Presence Health

Presence Health is the largest Catholic health system in Illinois, serving over 4 million people in 11 counties. With over 150 sites of compassionate care including 12 hospitals, over 17,000 associates and more than 4,000 medical professionals, Presence Health has annual revenue of \$2.6 billion.



Tickets on sale now at:  
[nyrnahse.org/tickets](http://nyrnahse.org/tickets)

New York Regional Chapter of NAHSE

**Scholarship Gala**

September 21st, 6pm - 9pm

Go to [nyrnahse.org/info](http://nyrnahse.org/info)  
for more information.



# National Association of Health Services Executives National Chapters

## ATLANTA

Chapter President  
Briene M. Simmons, MHA  
Manager  
Centralized Scheduling  
Children's Healthcare of Atlanta

## AUSTIN

Chapter President  
Herb Dyer  
VP, Hospital Continuity &  
Community Outreach  
Seton

## BALTIMORE

Chapter President  
Darren Brownlee  
Assistant Administrator  
Department of Medicine  
Johns Hopkins Bayview Medical Center

## CHICAGO-MIDWEST

Chapter President  
Sherri Peavy  
Chief Operations Officer  
UI Mile Square Health Center

## CONNECTICUT

Chapter President  
Craig Glover  
Chief Executive Officer  
Northwalk Community Health Center, Inc.

## DALLAS FORT-WORTH

Chapter President  
Grayling Dwayne Yarbrough, Jr.  
Project Manager, Population Health  
Management and Health Plans  
CHRISTUS Health

## DELAWARE VALLEY

Chapter President  
Reyna Florentino  
Program Manager  
Department of Patient Safety  
The Guthrie Clinic - Robert Packer  
Hospital

## DETROIT

Chapter President  
Valerie Gunn  
Group Practice Director  
Department of Surgery  
Henry Ford Health System

## GOLDEN STATE CALIFORNIA

Chapter President  
Debra Green Oliphant  
Director, Medical Staff &  
Pediatric Residency Program  
Stanford Health Care

## GREATER DENVER

Chapter President  
Mario Harding  
Associate Chief Operating Officer  
Denver Health Medical Center

## GREATER NASHVILLE

Chapter President  
Ryan Nelson  
Director of Business Development  
Guardian Healthcare Providers

## HOUSTON

Chapter President  
Carl McGowan  
Regional Director  
United Healthcare

## KANSAS CITY REGIONAL

Chapter President  
Brandie Gholson  
Director of Physician Relations  
Carondelet Long Term Care Facilities, Inc.

## KENTUCKY

Chapter President  
Adonna Bass Wickliffe  
Director, Strategy & Business Development  
KentuckyOne Health

## MEMPHIS

Chapter President  
Jeremy Sanders  
Methodist Le Bonheur Healthcare

## NEW JERSEY

Chapter President  
Vanessa Smith  
CHRO & VP of Human Resources  
Robert Wood Johnson  
Barnabas Health

## NEW YORK REGIONAL

Chapter President  
Hope Mason

## NORTH CAROLINA

Chapter President  
LeVelton Thomas  
Strategic Services Associate  
Duke University Hospital

## OHIO RIVER VALLEY

Chapter President  
Venita Robinson  
Clinical Research Coordinator III  
Cincinnati Children's Hospital Medical Center

## PITTSBURGH

Chapter President  
LaJuana Fuller  
Director, Women's Imaging  
University of Pittsburgh Medical Center

## SAN ANTONIO

Chapter President  
Nicole Leonard  
Senior Healthcare Analyst  
Defense Agency

## SOUTH CAROLINA

Chapter President  
Dr. Cynthia Walters  
Corporate Director of Inclusion  
Palmetto Health

## SOUTH FLORIDA

Chapter President  
Christie Grays  
Director Community Relations  
Baptist Health South Florida

## SOUTHEASTERN LOUISIANA

Chapter President  
Brandon Darrington  
Administrative Fellow  
Tulane Medical Center

## SOUTHERN CALIFORNIA

Chapter President  
Rhonda Bean, MHA, RCFE  
Chief Operations Officer

## ST. LOUIS

Chapter President  
Carmel Hannah  
Manager, Diversity and Inclusion  
Barnes-Jewish Hospital

## VA NATIONAL (VETERAN AFFAIRS)

Chapter President  
Jasline Knox, MSHA  
Prosthetic Representative  
VA Capital Health Care Network

## WASHINGTON METROPOLITAN AREA CHAPTER

Chapter President  
Charlisa Watson  
President and CEO  
CRW & Associates, LLC

## WESTERN MICHIGAN REGION

Chapter President  
Seline Nichols  
Director, Patient Access & Financial Svcs  
Mercy Health Saint Mary's



**National Association of  
Health Services Executives**  
Empowering the **Next Generation**  
of Health Care Leaders Today

NAHSE.ORG

**“WHAT IF WE COULD  
ALL BE HEALTHCARE  
PROFESSIONALS?”**



**National Association of  
Health Services Executives**

Empowering the **Next Generation**  
of Health Care Leaders Today